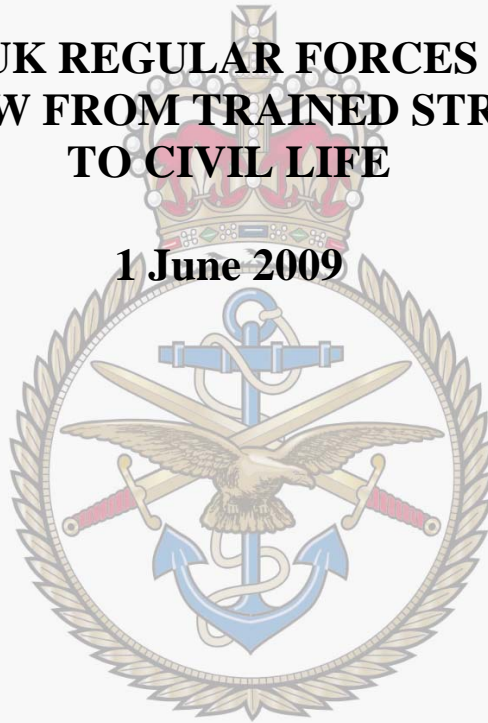


TSP 5
MONTHLY PUBLICATION



**UK REGULAR FORCES
OUTFLOW FROM TRAINED STRENGTH
TO CIVIL LIFE**

1 June 2009



Published: 17th July 2009

MINISTRY OF DEFENCE

Oliver Leamon
DASA (Quad Service)
Ministry of Defence
Zone K, 3rd Floor
MoD Main Building,
Whitehall, London
SW1A 2HB

Tel: **020-7218-80390**

Fax: **020-7218-0969**

Mil: **9621 87821**

E-mail: dasa-info@dasa-office@mod.uk
Web site: www.dasa.mod.uk

DASA

All Outflow

All Services

Table 1	All Services Officers – Outflow from Trained Strength to Civil Life	4
Table 2	All Services Other Ranks – Outflow from Trained Strength to Civil Life	4
Graph 1	All Services Officers – 12 Month Outflow Rate	5
Graph 2	All Services Other Ranks – 12 Month Outflow Rate	5

Naval Service

Table 3	Naval Service Officers – Outflow from Trained Strength to Civil Life	6
Table 4	Naval Service Other Ranks – Outflow from Trained Strength to Civil Life	6
Graph 3	Naval Service Officers – 12 Month Outflow Rate	7
Graph 4	Naval Service Other Ranks – 12 Month Outflow Rate	7

Army

Table 5	Army Officers – Outflow from Trained Strength to Civil Life	8
Table 6	Army Other Ranks – Outflow from Trained Strength to Civil Life	8
Graph 5	Army Officers – 12 Month Outflow Rate	9
Graph 6	Army Other Ranks – 12 Month Outflow Rate	9

Royal Air Force

Table 7	RAF Officers – Outflow from Trained Strength to Civil Life	10
Table 8	RAF Other Ranks – Outflow from Trained Strength to Civil Life	10
Graph 7	RAF Officers – 12 Month Outflow Rate	11
Graph 8	RAF Other Ranks – 12 Month Outflow Rate	11

Notes		27
--------------	--	----

Voluntary Outflow

All Services

Table 9	All Services Officers – Voluntary Outflow Applications and Exits	12
Table 10	All Services Other Ranks – Voluntary Outflow Applications and Exits	12
Graph 9	All Services Officers – 12 Month Voluntary Outflow Rates	13
Graph 10	All Services Other Ranks – 12 Month Voluntary Outflow Rates	13
Graph 9a	Total Officers by Service – 12 Month Voluntary Outflow Application Rate	14
Graph 9b	Total Officers by Service – 12 Month Voluntary Outflow Exit Rate	14
Graph 10a	Total Other Ranks by Service – 12 Month Voluntary Outflow Application Rate	15
Graph 10b	Total Other Ranks by Service – 12 Month Voluntary Outflow Exit Rate	15

Naval Service

Table 11	Naval Service Officers – Voluntary Outflow Applications and Exits	16
Table 12	Naval Service Other Ranks – Voluntary Outflow Applications and Exits	16
Graph 11	Naval Service Officers – 12 Month Voluntary Outflow Rates	17
Graph 12	Naval Service Other Ranks – 12 Month Voluntary Outflow Rates	17

Army

Table 13	Army Officers – Voluntary Outflow Applications and Exits	18
Table 14	Army Other Ranks – Voluntary Outflow Applications and Exits	18
Graph 13	Army Officers – 12 Month Voluntary Outflow Rates	19
Graph 14	Army Other Ranks – 12 Month Voluntary Outflow Rates	19

RAF

Table 15	RAF Officers – Voluntary Outflow Applications and Exits	20
Table 16	RAF Other Ranks – Voluntary Outflow Applications and Exits	20
Graph 15	RAF Officers – 12 Month Voluntary Outflow Rates	21
Graph 16	RAF Other Ranks – 12 Month Voluntary Outflow Rates	21

Notes		27
--------------	--	----

Underlying Voluntary Outflow rate

All Services

Table 17	Total Officers by Service – Index of Underlying Voluntary Outflow Rate	22
Table 18	Total Other Ranks by Service – Index of Underlying Voluntary Outflow Rate	22
Graph 17	Total Officers by Gender – 10 Year Voluntary Outflow index	23
Graph 18	Total Other Ranks by Gender – 10 Year Voluntary Outflow index	23

Naval Service

Graph 19	Naval Service Officers by Gender – 10 Year Voluntary Outflow index	24
Graph 20	Naval Service Other Ranks by Gender – 10 Year Voluntary Outflow index	24

Army

Graph 21	Army Officers by Gender – 10 Year Voluntary Outflow index	25
Graph 22	Army Other Ranks by Gender – 10 Year Voluntary Outflow index	25

RAF

Graph 23	RAF Officers by Gender – 10 Year Voluntary Outflow index	26
Graph 24	RAF Other Ranks by Gender – 10 Year Voluntary Outflow index	26

Notes		27
--------------	--	----

A National Statistics publication

National Statistics are produced to high professional standards set out in the National Statistics Code of Practice. They undergo regular reviews to ensure they meet customer needs. They are produced free from any political interference.

For general enquiries about National Statistics, contact the National Statistics Customer Contact Centre on: **0845 601 3034**
Room 1.015,
Office of National Statistics,
Cardiff Road,
Newport,
NP10 8XG
Fax: **01633 652747**
minicom: **01633 812399**
E-mail: info@statistics.gov.uk
Internet: www.statistics.gov.uk

ALL SERVICES OFFICERS

Table 1: OUTFLOW FROM TRAINED STRENGTH TO CIVIL LIFE¹

Numbers and rates per 100 trained strength

	TRAINED STRENGTH (AVERAGE)	VOLUNTARY OUTFLOW ²		TIME EXPIRY		REDUNDANCY		OTHER WASTAGE		TOTAL		
		Number	Rate	Number	Rate	Number	Rate	Number	Rate	Number	Rate	
Financial Years												
1999/00	29,090	890	3.1	900	3.1	-	-	160	0.6	1,950	6.7	
2000/01	29,060	940	3.2	850	2.9	-	-	120	0.4	1,920	6.6	
2001/02	28,960	1,040	3.6	820	2.8	-	-	110	0.4	1,970	6.8	
2002/03	29,220	810	2.8	790	2.7	-	-	120	0.4	1,720	5.9	
2003/04	29,730	860	2.9	760	2.6	-	-	110	0.4	1,740	5.8	
2004/05	29,970	930	3.1	880	2.9	-	-	160	0.5	1,970	6.6	
2005/06	29,810	1,010	3.4	880	2.9	40	0.1	150	0.5	2,080	7.0	
2006/07	29,390 ^P	2,310 ^P	7.9 ^P	
2007/08	29,030 ^P	2,340 ^P	8.1 ^P	
2008/09	28,660 ^P	2,120 ^P	7.4 ^P	
12-Month Period Ending												
2006/07	30 Jun	29,730	1,050	3.5	850	2.9	220	0.8	150	0.5	2,270	7.6
	30 Sep	29,600	1,050	3.5	860	2.9	200	0.7	130	0.5	2,240	7.6
	31 Dec	29,480	1,050 ^P	3.6 ^P	850 ^P	2.9 ^P	230 ^P	0.8 ^P	130 ^P	0.4 ^P	2,260 ^P	7.7 ^P
	31 Mar	29,390 ^P	2,310 ^P	7.9 ^P
2007/08	30 Jun	29,330 ^P	2,170 ^P	7.4 ^P
	30 Sep	29,270 ^P	2,290 ^P	7.8 ^P
	31 Dec	29,170 ^P	2,370 ^P	8.1 ^P
	31 Mar	29,030 ^P	2,340 ^P	8.1 ^P
2008/09	30 Jun	28,900 ^P	2,340 ^P	8.1 ^P
	30 Sep	28,800 ^P	2,220 ^P	7.7 ^P
	31 Dec	28,720 ^P	2,130 ^P	7.4 ^P
	31 Mar	28,660 ^P	2,120 ^P	7.4 ^P
	31 Mar	28,660 ^P	2,120 ^P	7.4 ^P
	30 Apr	28,650 ^P	2,050 ^P	7.2 ^P
	31 May 2009	28,640 ^P	2,010 ^P	7.0 ^P

Source: DASA (Quad-Service)

ALL SERVICES OTHER RANKS

Table 2: OUTFLOW FROM TRAINED STRENGTH TO CIVIL LIFE¹

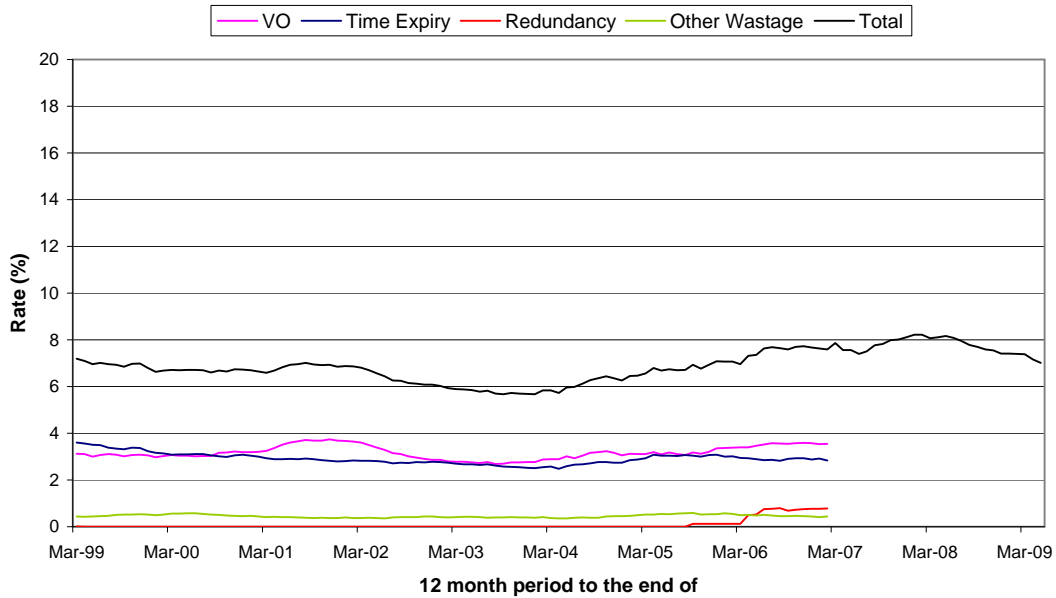
Numbers and rates per 100 trained strength

	TRAINED STRENGTH (AVERAGE)	VOLUNTARY OUTFLOW ^{3,4}		TIME EXPIRY		REDUNDANCY		OTHER WASTAGE		TOTAL		
		Number	Rate	Number	Rate	Number	Rate	Number	Rate	Number	Rate	
Financial Years												
1999/00	157,250	8,750	5.6	4,210	2.7	-	-	3,140	2.0	16,100	10.2	
2000/01	155,760	8,330	5.3	4,140	2.7	-	-	3,220	2.1	15,680	10.1	
2001/02	153,380	8,700	5.7	3,860	2.5	-	-	3,400	2.2	15,960	10.4	
2002/03	152,840	7,730	5.1	3,870	2.5	-	-	3,530	2.3	15,130	9.9	
2003/04	153,770	7,620	5.0	3,140	2.0	-	-	3,960	2.6	14,730	9.6	
2004/05	154,440	8,230	5.3	3,070	2.0	-	-	4,340	2.8	15,640	10.1	
2005/06	150,950	8,160	5.4	3,580	2.4	500	0.3	3,830	2.5	16,070	10.6	
2006/07	145,420 ^P	16,560 ^P	11.4 ^P	
2007/08	141,080 ^P	15,670 ^P	11.1 ^P	
2008/09	139,320 ^P	13,950 ^P	10.0 ^P	
12-Month Period Ending												
2006/07	30 Jun	149,570	8,450	5.7	3,530	2.4	1,500	1.0	3,600	2.4	17,090	11.4
	30 Sep	148,100	8,370	5.7	3,530	2.4	1,090	0.7	3,410	2.3	16,400	11.1
	31 Dec	146,720	8,150 ^P	5.6 ^P	3,480 ^P	2.4 ^P	1,080 ^P	0.7 ^P	3,460 ^P	2.4 ^P	16,160 ^P	11.0 ^P
	31 Mar	145,420 ^P	16,560 ^P	11.4 ^P
2007/08	30 Jun	144,200 ^P	15,780 ^P	10.9 ^P
	30 Sep	143,110 ^P	15,950 ^P	11.1 ^P
	31 Dec	142,070 ^P	16,120 ^P	11.3 ^P
	31 Mar	141,080 ^P	15,670 ^P	11.1 ^P
2008/09	30 Jun	140,400 ^P	15,370 ^P	10.9 ^P
	30 Sep	139,800 ^P	15,230 ^P	10.9 ^P
	31 Dec	139,470 ^P	14,630 ^P	10.5 ^P
	31 Mar	139,320 ^P	13,950 ^P	10.0 ^P
	31 Mar	139,320 ^P	13,950 ^P	10.0 ^P
	30 Apr	139,320 ^P	13,760 ^P	9.9 ^P
	31 May 2009	139,350 ^P	13,310 ^P	9.6 ^P

Source: DASA (Quad-Service)

Graph 1: All Services Officers

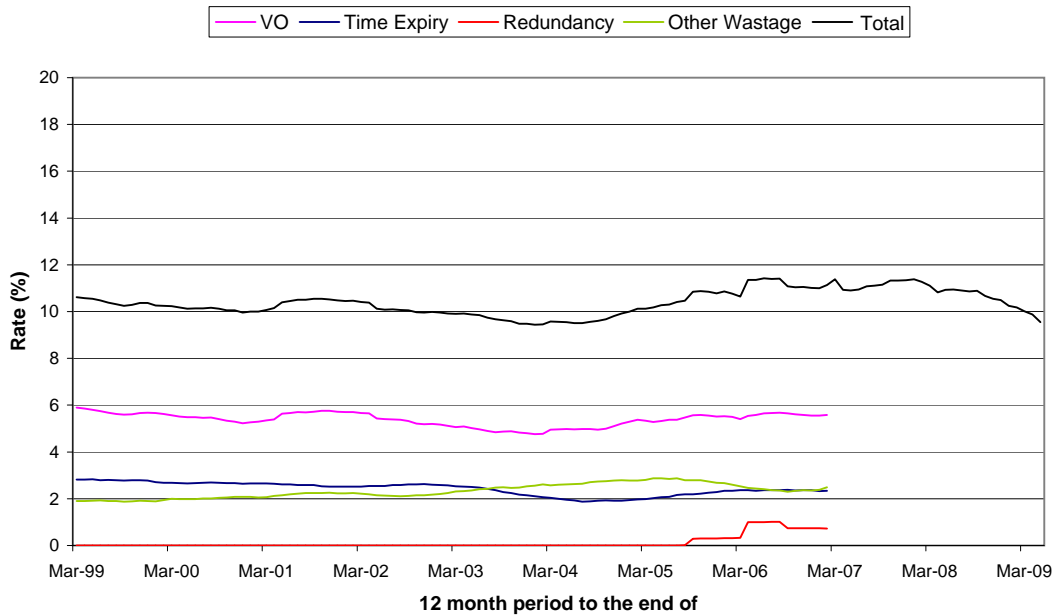
12 Month outflow rate as a percentage of average trained strength



Source: DASA (Quad-Service)

Graph 2: All Services Other Ranks

12 Month outflow rate as a percentage of average trained strength



Source: DASA (Quad-Service)

NAVAL SERVICE OFFICERS

Table 3: OUTFLOW FROM TRAINED STRENGTH TO CIVIL LIFE ¹

Numbers and rates per 100 trained strength

	TRAINED STRENGTH (AVERAGE)	VOLUNTARY OUTFLOW ²		TIME EXPIRY		REDUNDANCY		OTHER WASTAGE		TOTAL		
		Number	Rate	Number	Rate	Number	Rate	Number	Rate	Number	Rate	
Financial Years												
1999/00	6,560	240	3.6	220	3.3	-	-	50	0.7	500	7.7	
2000/01	6,520	170	2.6	200	3.0	-	-	40	0.6	410	6.2	
2001/02	6,520	230	3.5	180	2.8	-	-	40	0.6	450	6.9	
2002/03	6,550	170	2.6	180	2.7	-	-	50	0.7	390	6.0	
2003/04	6,670	160	2.5	190	2.8	-	-	30	0.5	380	5.7	
2004/05	6,690	170	2.5	190	2.9	-	-	60	0.9	420	6.3	
2005/06	6,650	190	2.8	190	2.8	-	-	50	0.8	430	6.5	
2006/07	6,600	210 ^P	3.1 ^P	160 ^P	2.3 ^P	- ^P	- ^P	40 ^P	0.5 ^P	400 ^P	6.0 ^P	
2007/08	6,540 ^P	280 ^P	4.3 ^P	140 ^P	2.2 ^P	- ^P	- ^P	30 ^P	0.5 ^P	460 ^P	7.0 ^P	
2008/09	6,440 ^P	260 ^P	4.0 ^P	130 ^P	2.0 ^P	- ^P	- ^P	20 ^P	0.3 ^P	410 ^P	6.4 ^P	
12-Month Period Ending												
2006/07	30 Jun	6,630	200	3.0	180	2.7	-	-	60	0.9	440	6.6
	30 Sep	6,610	210	3.1	180	2.7	-	-	50	0.8	440	6.7
	31 Dec	6,600	200 ^P	3.1 ^P	160 ^P	2.4 ^P	- ^P	- ^P	40 ^P	0.7 ^P	410 ^P	6.2 ^P
	31 Mar	6,600	210 ^P	3.1 ^P	160 ^P	2.3 ^P	- ^P	- ^P	40 ^P	0.5 ^P	400 ^P	6.0 ^P
2007/08	30 Jun	6,610 ^P	220 ^P	3.4 ^P	140 ^P	2.2 ^P	- ^P	- ^P	30 ^P	0.4 ^P	390 ^P	5.9 ^P
	30 Sep	6,610 ^P	240 ^P	3.6 ^P	140 ^P	2.2 ^P	- ^P	- ^P	30 ^P	0.4 ^P	410 ^P	6.2 ^P
	31 Dec	6,580 ^P	260 ^P	4.0 ^P	160 ^P	2.4 ^P	- ^P	- ^P	30 ^P	0.5 ^P	450 ^P	6.9 ^P
	31 Mar	6,540 ^P	280 ^P	4.3 ^P	140 ^P	2.2 ^P	- ^P	- ^P	30 ^P	0.5 ^P	460 ^P	7.0 ^P
2008/09	30 Jun	6,510 ^P	300 ^P	4.5 ^P	150 ^P	2.2 ^P	- ^P	- ^P	30 ^P	0.5 ^P	470 ^P	7.3 ^P
	30 Sep	6,480 ^P	270 ^P	4.1 ^P	130 ^P	2.1 ^P	- ^P	- ^P	30 ^P	0.5 ^P	430 ^P	6.6 ^P
	31 Dec	6,450 ^P	270 ^P	4.2 ^P	130 ^P	2.0 ^P	- ^P	- ^P	30 ^P	0.4 ^P	430 ^P	6.6 ^P
	31 Mar	6,440 ^P	260 ^P	4.0 ^P	130 ^P	2.0 ^P	- ^P	- ^P	20 ^P	0.3 ^P	410 ^P	6.4 ^P
	31 Mar	6,440 ^P	260 ^P	4.0 ^P	130 ^P	2.0 ^P	- ^P	- ^P	20 ^P	0.3 ^P	410 ^P	6.4 ^P
	30 Apr	6,440 ^P	260 ^P	4.0 ^P	130 ^P	2.0 ^P	- ^P	- ^P	20 ^P	0.3 ^P	410 ^P	6.4 ^P
	31 May 2009	6,440^P	260^P	4.0^P	120^P	1.9^P	-^P	-^P	20^P	0.3^P	400^P	6.3^P

Source: DASA (Quad-Service)

NAVAL SERVICE OTHER RANKS

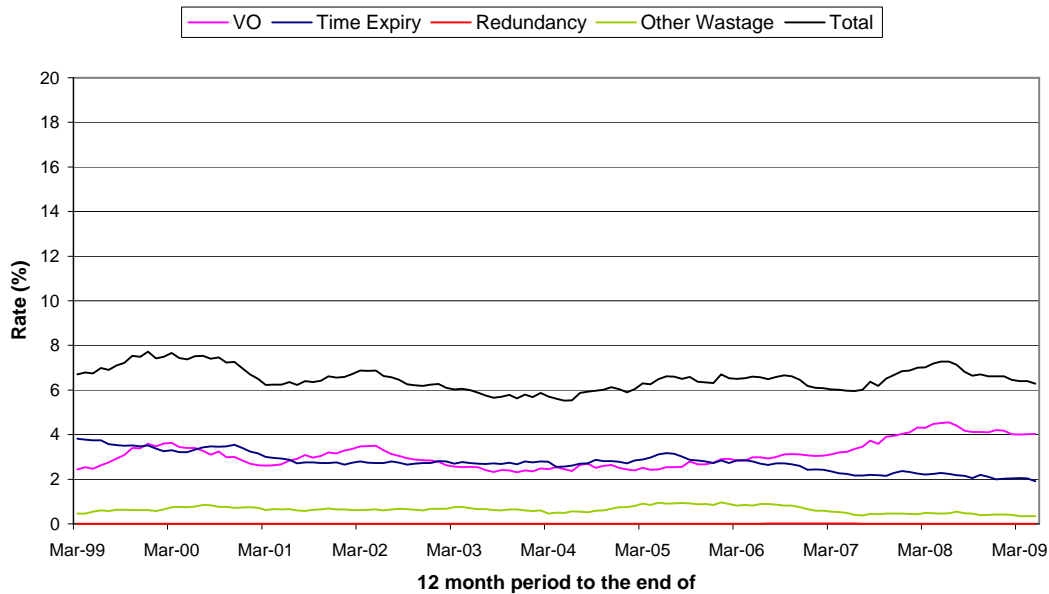
Table 4: OUTFLOW FROM TRAINED STRENGTH TO CIVIL LIFE ¹

Numbers and rates per 100 trained strength

	TRAINED STRENGTH (AVERAGE)	VOLUNTARY OUTFLOW ^{3,4}		TIME EXPIRY		REDUNDANCY		OTHER WASTAGE		TOTAL		
		Number	Rate	Number	Rate	Number	Rate	Number	Rate	Number	Rate	
Financial Years												
1999/00	32,060	1,680	5.2	1,110	3.5	-	-	820	2.6	3,610	11.3	
2000/01	31,680	1,330	4.2	1,000	3.2	-	-	790	2.5	3,120	9.9	
2001/02	30,650	1,970	6.4	880	2.9	-	-	730	2.4	3,580	11.7	
2002/03	30,100	1,590	5.3	880	2.9	-	-	690	2.3	3,160	10.5	
2003/04	29,740	1,680	5.7	740	2.5	-	-	630	2.1	3,060	10.3	
2004/05	29,250	1,860	6.3	580	2.0	-	-	730	2.5	3,170	10.8	
2005/06	28,470	1,700	6.0	420	1.5	-	-	750	2.6	2,870	10.1	
2006/07	28,030	1,760 ^P	6.3 ^P	440 ^P	1.6 ^P	- ^P	- ^P	610 ^P	2.2 ^P	2,800 ^P	10.0 ^P	
2007/08	27,890 ^P	1,760 ^P	6.3 ^P	380 ^P	1.4 ^P	- ^P	- ^P	520 ^P	1.8 ^P	2,660 ^P	9.5 ^P	
2008/09	27,840 ^P	1,680 ^P	6.0 ^P	520 ^P	1.9 ^P	- ^P	- ^P	630 ^P	2.3 ^P	2,840 ^P	10.2 ^P	
12-Month Period Ending												
2006/07	30 Jun	28,360	1,760	6.2	400	1.4	-	-	720	2.5	2,880	10.2
	30 Sep	28,260	1,740	6.2	400	1.4	-	-	650	2.3	2,800	9.9
	31 Dec	28,160	1,690 ^P	6.0 ^P	400 ^P	1.4 ^P	- ^P	- ^P	630 ^P	2.2 ^P	2,720 ^P	9.7 ^P
	31 Mar	28,030	1,760 ^P	6.3 ^P	440 ^P	1.6 ^P	- ^P	- ^P	610 ^P	2.2 ^P	2,800 ^P	10.0 ^P
2007/08	30 Jun	27,870 ^P	1,750 ^P	6.3 ^P	440 ^P	1.6 ^P	- ^P	- ^P	550 ^P	2.0 ^P	2,740 ^P	9.8 ^P
	30 Sep	27,830 ^P	1,770 ^P	6.4 ^P	420 ^P	1.5 ^P	- ^P	- ^P	530 ^P	1.9 ^P	2,720 ^P	9.8 ^P
	31 Dec	27,840 ^P	1,820 ^P	6.5 ^P	400 ^P	1.4 ^P	- ^P	- ^P	510 ^P	1.8 ^P	2,740 ^P	9.8 ^P
	31 Mar	27,890 ^P	1,760 ^P	6.3 ^P	380 ^P	1.4 ^P	- ^P	- ^P	520 ^P	1.8 ^P	2,660 ^P	9.5 ^P
2008/09	30 Jun	27,980 ^P	1,720 ^P	6.2 ^P	420 ^P	1.5 ^P	- ^P	- ^P	580 ^P	2.1 ^P	2,720 ^P	9.7 ^P
	30 Sep	27,950 ^P	1,710 ^P	6.1 ^P	460 ^P	1.6 ^P	- ^P	- ^P	600 ^P	2.1 ^P	2,760 ^P	9.9 ^P
	31 Dec	27,890 ^P	1,730 ^P	6.2 ^P	470 ^P	1.7 ^P	- ^P	- ^P	630 ^P	2.3 ^P	2,830 ^P	10.1 ^P
	31 Mar	27,840 ^P	1,680 ^P	6.0 ^P	520 ^P	1.9 ^P	- ^P	- ^P	630 ^P	2.3 ^P	2,840 ^P	10.2 ^P
	31 Mar	27,840 ^P	1,680 ^P	6.0 ^P	520 ^P	1.9 ^P	- ^P	- ^P	630 ^P	2.3 ^P	2,840 ^P	10.2 ^P
	30 Apr	27,830 ^P	1,660 ^P	6.0 ^P	520 ^P	1.9 ^P	- ^P	- ^P	620 ^P	2.2 ^P	2,800 ^P	10.1 ^P
	31 May 2009	27,820^P	1,620^P	5.8^P	490^P	1.7^P	-^P	-^P	620^P	2.2^P	2,720^P	9.8^P

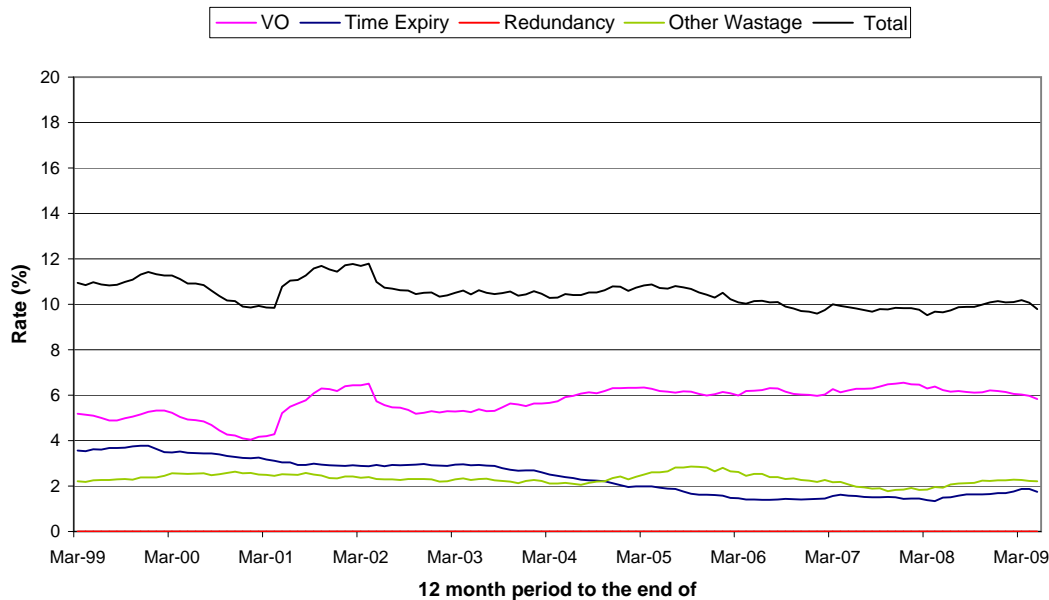
Source: DASA (Quad-Service)

Graph 3: Naval Service Officers
12 Month outflow rate as a percentage of average trained strength



Source: DASA (Quad-Service)

Graph 4: Naval Service Other Ranks
12 Month outflow rate as a percentage of average trained strength



Source: DASA (Quad-Service)

ARMY OFFICERS

Table 5: OUTFLOW FROM TRAINED STRENGTH TO CIVIL LIFE¹

Numbers and rates per 100 trained strength

	TRAINED STRENGTH (AVERAGE)	VOLUNTARY OUTFLOW ²		TIME EXPIRY		REDUNDANCY		OTHER WASTAGE		TOTAL		
		Number	Rate	Number	Rate	Number	Rate	Number	Rate	Number	Rate	
Financial Years												
1999/00	12,770	440	3.5	370	2.9	-	-	80	0.6	890	7.0	
2000/01	12,820	530	4.1	320	2.5	-	-	50	0.4	900	7.0	
2001/02	12,860	540	4.2	320	2.5	-	-	40	0.3	900	7.0	
2002/03	13,070	440	3.4	300	2.3	-	-	50	0.4	800	6.1	
2003/04	13,420	500	3.7	240	1.8	-	-	40	0.3	780	5.8	
2004/05	13,650	530	3.9	320	2.4	-	-	50	0.4	900	6.6	
2005/06	13,750	590	4.3	340	2.5	-	-	50	0.3	980	7.1	
2006/07	13,790 ^P	1,110 ^P	8.1 ^P	
2007/08	13,770 ^P	1,160 ^P	8.4 ^P	
2008/09	13,730 ^P	1,110 ^P	8.1 ^P	
12-Month Period Ending												
2006/07	30 Jun	13,780	590	4.3	330	2.4	90	0.6	50	0.3	1,050	7.6
	30 Sep	13,780	590	4.3	320	2.3	90	0.7	40	0.3	1,040	7.5
	31 Dec	13,780	590	4.3	330	2.4	120	0.8	40	0.3	1,070	7.8
	31 Mar	13,790 ^P	1,110 ^P	8.1 ^P	
2007/08	30 Jun	13,800 ^P	1,050 ^P	7.6 ^P	
	30 Sep	13,820 ^P	1,140 ^P	8.2 ^P	
	31 Dec	13,810 ^P	1,200 ^P	8.7 ^P	
	31 Mar	13,770 ^P	1,160 ^P	8.4 ^P	
2008/09	30 Jun	13,750 ^P	1,180 ^P	8.6 ^P	
	30 Sep	13,730 ^P	1,140 ^P	8.3 ^P	
	31 Dec	13,730 ^P	1,080 ^P	7.9 ^P	
	31 Mar	13,730 ^P	1,110 ^P	8.1 ^P	
	31 Mar	13,730 ^P	1,110 ^P	8.1 ^P	
	30 Apr	13,730 ^P	1,050 ^P	7.7 ^P	
	31 May 2009	13,730^P	1,040^P	7.5^P	

Source: DASA (Quad-Service)

ARMY OTHER RANKS

Table 6: OUTFLOW FROM TRAINED STRENGTH TO CIVIL LIFE¹

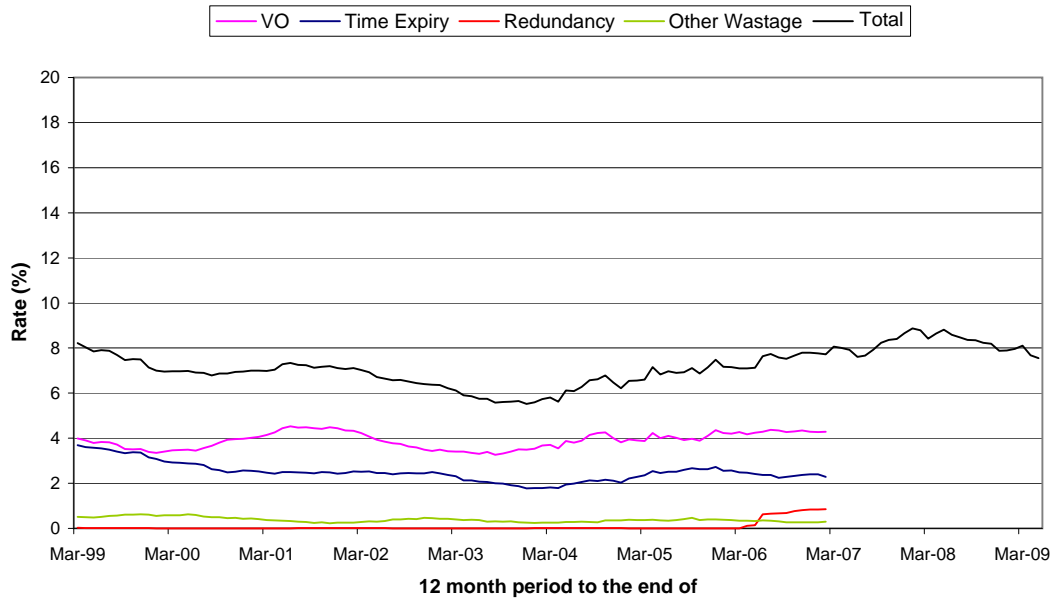
Numbers and rates per 100 trained strength

	TRAINED STRENGTH (AVERAGE)	VOLUNTARY OUTFLOW		TIME EXPIRY		REDUNDANCY		OTHER WASTAGE		TOTAL		
		Number	Rate	Number	Rate	Number	Rate	Number	Rate	Number	Rate	
Financial Years												
1999/00	83,640	5,310	6.4	1,770	2.1	-	-	2,030	2.4	9,110	10.9	
2000/01	83,520	5,310	6.4	1,730	2.1	-	-	2,130	2.6	9,180	11.0	
2001/02	83,100	4,980	6.0	1,690	2.0	-	-	2,410	2.9	9,090	10.9	
2002/03	83,700	4,610	5.5	1,810	2.2	-	-	2,460	2.3	8,870	10.6	
2003/04	85,210	4,500	5.3	1,570	1.8	-	-	2,720	3.2	8,790	10.3	
2004/05	85,980	4,880	5.7	1,840	2.1	-	-	3,110	3.6	9,840	11.4	
2005/06	84,010	4,620	5.5	2,290	2.7	-	-	2,610	3.1	9,520	11.3	
2006/07	82,070 ^P	9,820 ^P	12.0 ^P	
2007/08	80,460 ^P	9,310 ^P	11.6 ^P	
2008/09	80,430 ^P	8,240 ^P	10.2 ^P	
12-Month Period Ending												
2006/07	30 Jun	83,500	4,830	5.8	2,280	2.7	-	-	2,450	2.9	9,560	11.4
	30 Sep	82,980	4,850	5.8	2,250	2.7	-	-	2,330	2.8	9,430	11.4
	31 Dec	82,490	4,740	5.8	2,200	2.7	-	-	2,440	3.0	9,380	11.4
	31 Mar	82,070 ^P	9,820 ^P	12.0 ^P	
2007/08	30 Jun	81,640 ^P	9,650 ^P	11.8 ^P	
	30 Sep	81,210 ^P	9,810 ^P	12.1 ^P	
	31 Dec	80,830 ^P	9,730 ^P	12.0 ^P	
	31 Mar	80,460 ^P	9,310 ^P	11.6 ^P	
2008/09	30 Jun	80,250 ^P	9,400 ^P	11.7 ^P	
	30 Sep	80,160 ^P	9,250 ^P	11.5 ^P	
	31 Dec	80,250 ^P	8,850 ^P	11.0 ^P	
	31 Mar	80,430 ^P	8,240 ^P	10.2 ^P	
	31 Mar	80,430 ^P	8,240 ^P	10.2 ^P	
	30 Apr	80,500 ^P	8,130 ^P	10.1 ^P	
	31 May 2009	80,600^P	7,840^P	9.7^P	

Source: DASA (Quad-Service)

Graph 5: Army Officers

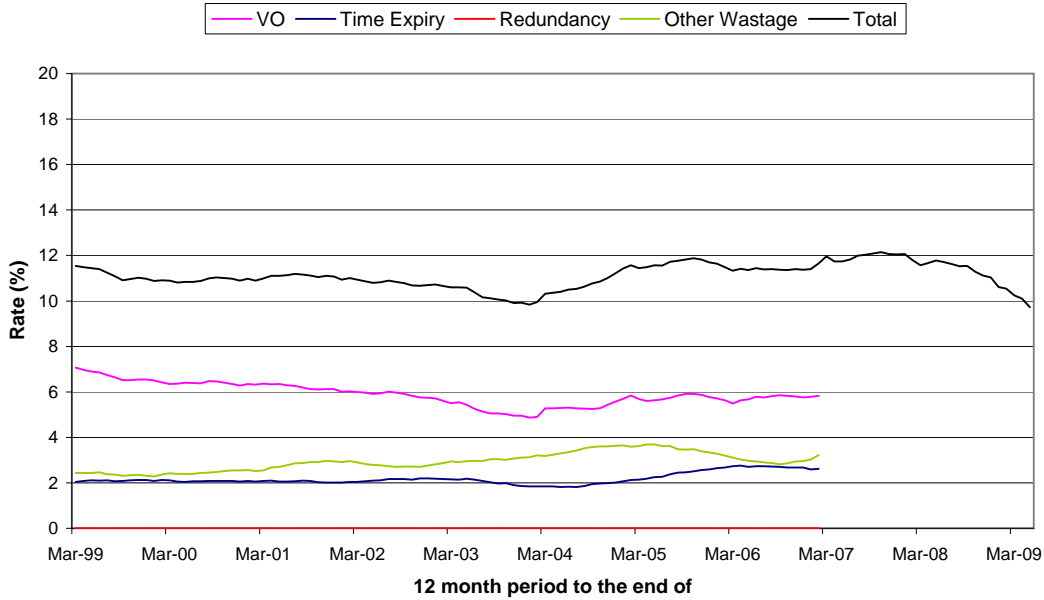
12 Month outflow rate as a percentage of average trained strength



Source: DASA (Quad-Service)

Graph 6: Army Other Ranks

12 Month outflow rate as a percentage of average trained strength



Source: DASA (Quad-Service)

RAF OFFICERS

Table 7: OUTFLOW FROM TRAINED STRENGTH TO CIVIL LIFE ¹

Numbers and rates per 100 trained strength

	TRAINED STRENGTH (AVERAGE)	VOLUNTARY OUTFLOW ²		TIME EXPIRY ⁵		REDUNDANCY		OTHER WASTAGE ⁵		TOTAL	
		Number	Rate	Number	Rate	Number	Rate	Number	Rate	Number	Rate
Financial Years											
1999/00	9,770	210	2.2	310	3.1	-	-	40	0.4	560	5.7
2000/01	9,710	240	2.5	340	3.5	-	-	30	0.3	610	6.3
2001/02	9,580	280	2.9	310	3.3	-	-	30	0.3	620	6.5
2002/03	9,600	200	2.1	310	3.2	-	-	20	0.2	530	5.5
2003/04	9,640	200	2.1	330	3.5	-	-	40	0.5	580	6.0
2004/05	9,630	240	2.4	360	3.8	-	-	40	0.5	640	6.7
2005/06	9,420	240	2.5	350	3.7	40	0.4	50	0.5	670	7.1
2006/07	9,000	260	2.9	370	4.1	110	1.2	60	0.6	800	8.9
2007/08	8,720 ^P	260 ^P	3.0 ^P	320 ^P	3.7 ^P	60 ^P	0.7 ^P	80 ^P	1.0 ^P	720 ^P	8.3 ^P
2008/09	8,490 ^P	250 ^P	2.9 ^P	- ^P	- ^P	590 ^P	7.0 ^P
12-Month Period Ending											
2006/07 30 Jun	9,320	260	2.8	340	3.7	140	1.5	40	0.5	780	8.4
30 Sep	9,210	260	2.8	360	4.0	110	1.2	40	0.5	770	8.4
31 Dec	9,100	260	2.9	360	4.0	110	1.2	50	0.5	780	8.6
31 Mar	9,000	260	2.9	370	4.1	110	1.2	60	0.6	800	8.9
2007/08 30 Jun	8,920 ^P	260 ^P	2.9 ^P	340 ^P	3.8 ^P	50 ^P	0.6 ^P	70 ^P	0.8 ^P	720 ^P	8.1 ^P
30 Sep	8,840 ^P	260 ^P	2.9 ^P	350 ^P	4.0 ^P	50 ^P	0.6 ^P	80 ^P	0.9 ^P	740 ^P	8.4 ^P
31 Dec	8,780 ^P	260 ^P	3.0 ^P	320 ^P	3.6 ^P	60 ^P	0.6 ^P	80 ^P	1.0 ^P	720 ^P	8.2 ^P
31 Mar	8,720 ^P	260 ^P	3.0 ^P	320 ^P	3.7 ^P	60 ^P	0.7 ^P	80 ^P	1.0 ^P	720 ^P	8.3 ^P
2008/09 30 Jun	8,650 ^P	260 ^P	3.1 ^P	310 ^P	3.6 ^P	20 ^P	0.2 ^P	90 ^P	1.0 ^P	680 ^P	7.9 ^P
30 Sep	8,590 ^P	260 ^P	3.0 ^P	10 ^P	0.1 ^P	640 ^P	7.5 ^P
31 Dec	8,540 ^P	250 ^P	3.0 ^P	- ^P	- ^P	620 ^P	7.3 ^P
31 Mar	8,490 ^P	250 ^P	2.9 ^P	- ^P	- ^P	590 ^P	7.0 ^P
31 Mar	8,490 ^P	250 ^P	2.9 ^P	- ^P	- ^P	590 ^P	7.0 ^P
30 Apr	8,480 ^P	240 ^P	2.8 ^P	- ^P	- ^P	590 ^P	6.9 ^P
31 May 2009	8,470^P	220^P	2.6^P	-^P	-^P	570^P	6.7^P

Source: DASA (Quad-Service)

RAF OTHER RANKS

Table 8: OUTFLOW FROM TRAINED STRENGTH TO CIVIL LIFE ¹

Numbers and rates per 100 trained strength

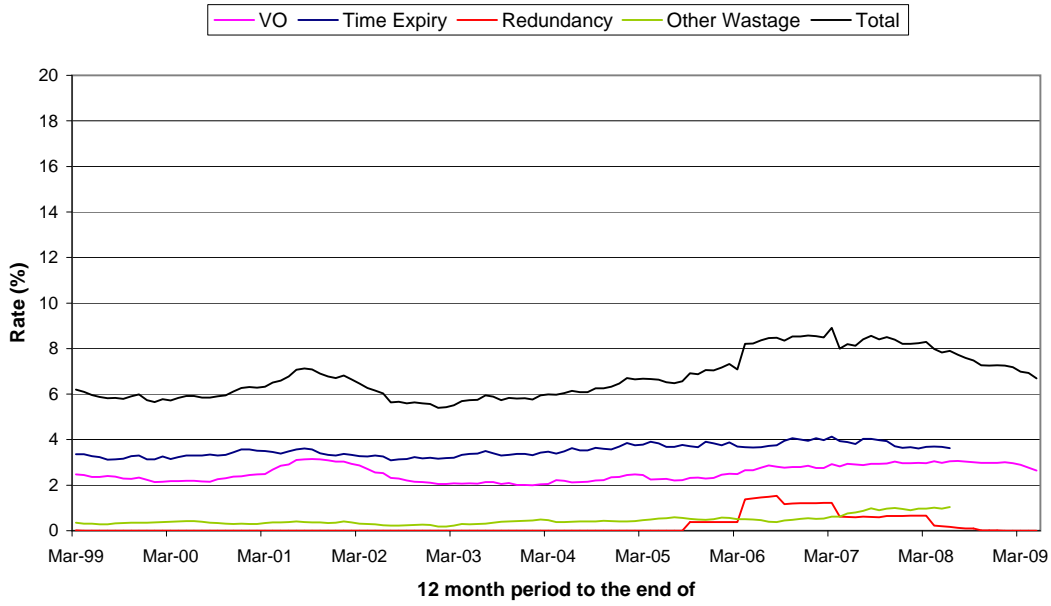
	TRAINED STRENGTH (AVERAGE)	VOLUNTARY OUTFLOW ⁴		TIME EXPIRY ⁵		REDUNDANCY		OTHER WASTAGE ⁵		TOTAL	
		Number	Rate	Number	Rate	Number	Rate	Number	Rate	Number	Rate
Financial Years											
1999/00	41,550	1,760	4.2	1,320	3.2	-	-	300	0.7	3,380	8.1
2000/01	40,560	1,690	4.2	1,400	3.4	-	-	300	0.7	3,380	8.3
2001/02	39,620	1,740	4.4	1,290	3.3	-	-	260	0.7	3,290	8.3
2002/03	39,040	1,530	3.9	1,180	3.0	-	-	380	2.3	3,090	7.9
2003/04	38,820	1,440	3.7	820	2.1	-	-	620	1.6	2,880	7.4
2004/05	39,200	1,490	3.8	640	1.6	-	-	490	1.2	2,630	6.7
2005/06	38,470	1,840	4.8	870	2.3	500	1.3	470	1.2	3,670	9.6
2006/07	35,310	1,640	4.6	890	2.5	1,060	3.0	360	1.0	3,930	11.1
2007/08	32,730 ^P	1,670 ^P	5.1 ^P	900 ^P	2.8 ^P	740 ^P	2.3 ^P	400 ^P	1.2 ^P	3,710 ^P	11.3 ^P
2008/09	31,050 ^P	1,720 ^P	5.5 ^P	- ^P	- ^P	2,880 ^P	9.3 ^P
12-Month Period Ending											
2006/07 30 Jun	37,720	1,860	4.9	860	2.3	1,500	4.0	430	1.1	4,650	12.3
30 Sep	36,870	1,780	4.8	880	2.4	1,090	3.0	430	1.2	4,180	11.3
31 Dec	36,080	1,710	4.7	870	2.4	1,080	3.0	390	1.1	4,060	11.3
31 Mar	35,310	1,640	4.6	890	2.5	1,060	3.0	360	1.0	3,930	11.1
2007/08 30 Jun	34,690 ^P	1,490 ^P	4.3 ^P	930 ^P	2.7 ^P	630 ^P	1.8 ^P	350 ^P	1.0 ^P	3,400 ^P	9.8 ^P
30 Sep	34,070 ^P	1,510 ^P	4.4 ^P	940 ^P	2.7 ^P	620 ^P	1.8 ^P	350 ^P	1.0 ^P	3,410 ^P	10.0 ^P
31 Dec	33,400 ^P	1,600 ^P	4.8 ^P	900 ^P	2.7 ^P	750 ^P	2.2 ^P	400 ^P	1.2 ^P	3,650 ^P	10.9 ^P
31 Mar	32,730 ^P	1,670 ^P	5.1 ^P	900 ^P	2.8 ^P	740 ^P	2.3 ^P	400 ^P	1.2 ^P	3,710 ^P	11.3 ^P
2008/09 30 Jun	32,160 ^P	1,840 ^P	5.7 ^P	840 ^P	2.6 ^P	160 ^P	0.5 ^P	400 ^P	1.3 ^P	3,250 ^P	10.1 ^P
30 Sep	31,690 ^P	1,860 ^P	5.9 ^P	130 ^P	0.4 ^P	3,210 ^P	10.1 ^P
31 Dec	31,340 ^P	1,760 ^P	5.6 ^P	- ^P	- ^P	2,950 ^P	9.4 ^P
31 Mar	31,050 ^P	1,720 ^P	5.5 ^P	- ^P	- ^P	2,880 ^P	9.3 ^P
31 Mar	31,050 ^P	1,720 ^P	5.5 ^P	- ^P	- ^P	2,880 ^P	9.3 ^P
30 Apr	30,990 ^P	1,660 ^P	5.4 ^P	- ^P	- ^P	2,830 ^P	9.1 ^P
31 May 2009	30,930^P	1,580^P	5.1^P	-^P	-^P	2,750^P	8.9^P

Source: DASA (Quad-Service)



Graph 7: RAF Officers

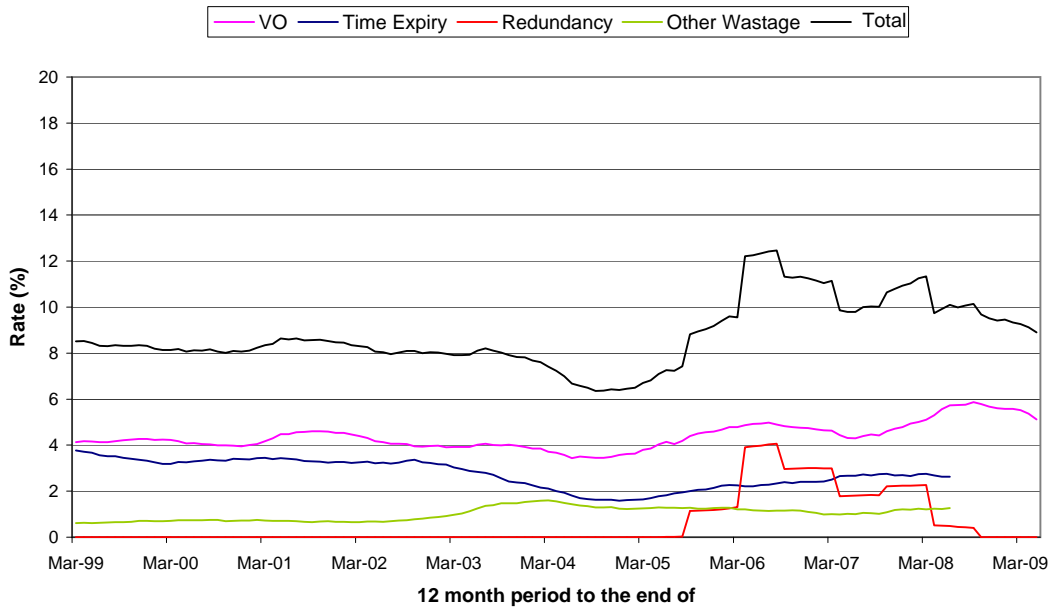
12 Month outflow rate as a percentage of average trained strength



Source: DASA (Quad-Service)

Graph 8: RAF Other Ranks

12 Month outflow rate as a percentage of average trained strength



Source: DASA (Quad-Service)

ALL SERVICES OFFICERS

Table 9: VOLUNTARY OUTFLOW - APPLICATIONS AND EXITS ^{1,2,6,7}

Numbers and rates per 100 trained strength

	APPLICATIONS						EXITS					
	Total		Male		Female		Total		Male		Female	
	Number	Rate	Number	Rate	Number	Rate	Number	Rate	Number	Rate	Number	Rate
Financial Years												
1999/00	1,010	3.5	930	3.5	80	3.6	890	3.1	840	3.1	60	2.5
2000/01	1,210	4.2	1,090	4.1	120	4.8	940	3.2	850	3.2	100	3.9
2001/02	950	3.3	840	3.2	110	4.5	1,040	3.6	950	3.6	90	3.6
2002/03	940	3.2	810	3.1	120	4.6	810	2.8	720	2.7	100	3.6
2003/04	1,000	3.4	890	3.3	110	3.8	860	2.9	760	2.8	100	3.4
2004/05	1,130	3.8	1,000	3.7	130	4.4	930	3.1	820	3.0	110	3.7
2005/06	1,190	4.0	1,060	4.0	130	4.1	1,010	3.4	900	3.4	110	3.5
2006/07
2007/08
2008/09
12-Month Period Ending												
2006/07 30 Jun	1,050	3.5	920	3.5	120	3.9
30 Sep	1,050	3.5	930	3.5	120	3.7
31 Dec	1,050 ^P	3.6 ^P	940 ^P	3.6 ^P	120 ^P	3.7 ^P
31 Mar
2007/08 30 Jun
30 Sep
31 Dec
31 Mar
2008/09 30 Jun
30 Sep
31 Dec
31 Mar
31 Mar
30 Apr
31 May 2009

Source: DASA (Quad-Service)

ALL SERVICES OTHER RANKS

Table 10: VOLUNTARY OUTFLOW - APPLICATIONS AND EXITS ^{1,3,4,6,7}

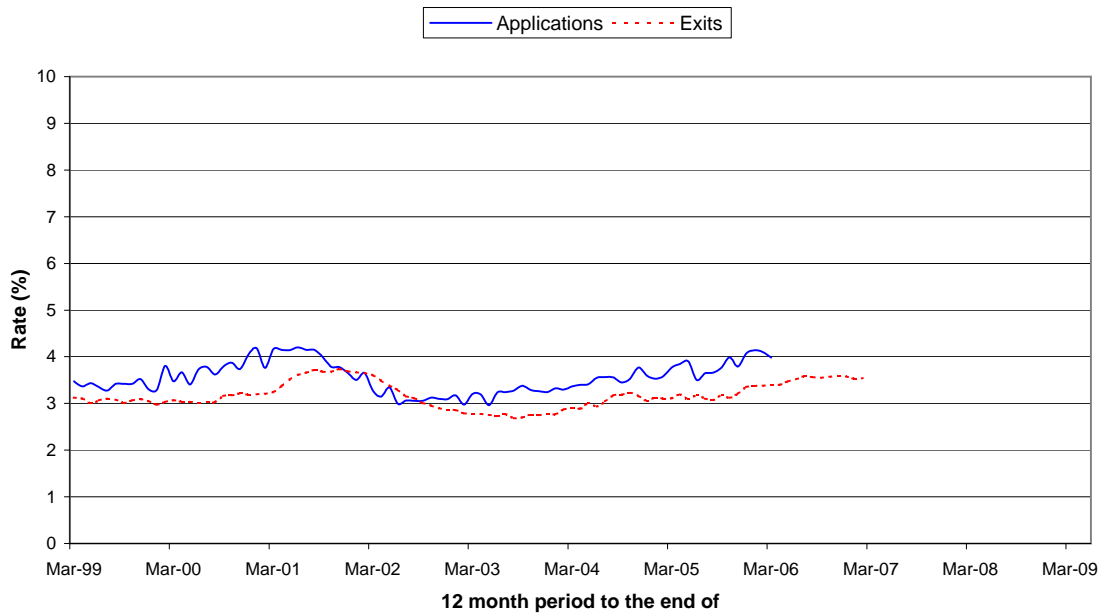
Numbers and rates per 100 trained strength

	APPLICATIONS						EXITS					
	Total		Male		Female		Total		Male		Female	
	Number	Rate	Number	Rate	Number	Rate	Number	Rate	Number	Rate	Number	Rate
Financial Years												
1999/00	10,700	6.8	9,500	6.5	1,200	10.5	8,750	5.6	7,750	5.3	990	8.7
2000/01	11,540	7.4	10,290	7.1	1,250	10.6	8,330	5.3	7,340	5.1	990	8.4
2001/02	11,380	7.4	10,100	7.1	1,280	10.8	8,700	5.7	7,700	5.4	1,000	8.4
2002/03	10,220	6.7	9,040	6.4	1,190	9.8	7,730	5.1	6,830	4.9	900	7.4
2003/04	10,620	6.9	9,460	6.7	1,160	9.2	7,620	5.0	6,720	4.8	910	7.2
2004/05	11,160	7.2	10,030	7.1	1,130	8.6	8,230	5.3	7,310	5.2	920	7.0
2005/06	10,700	7.1	9,570	6.9	1,130	8.7	8,160	5.4	7,260	5.3	900	6.9
2006/07
2007/08
2008/09
12-Month Period Ending												
2006/07 30 Jun	8,450	5.7	7,540	5.5	920	7.1
30 Sep	8,370	5.7	7,460	5.5	900	7.0
31 Dec	8,150 ^P	5.6 ^P	7,270 ^P	5.4 ^P	880 ^P	6.9 ^P
31 Mar
2007/08 30 Jun
30 Sep
31 Dec
31 Mar
2008/09 30 Jun
30 Sep
31 Dec
31 Mar
31 Mar
30 Apr
31 May 2009

Source: DASA (Quad-Service)

Graph 9: All Services Officers

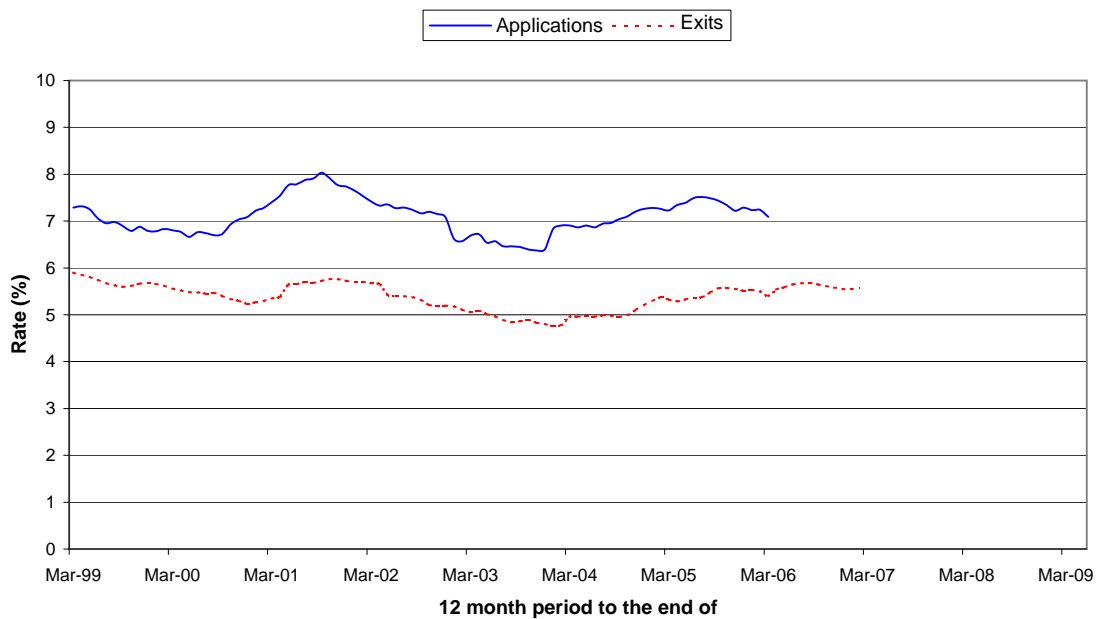
12 Month voluntary outflow rate as a percentage of average trained strength



Source: DASA (Quad-Service)

Graph 10: All Services Other Ranks

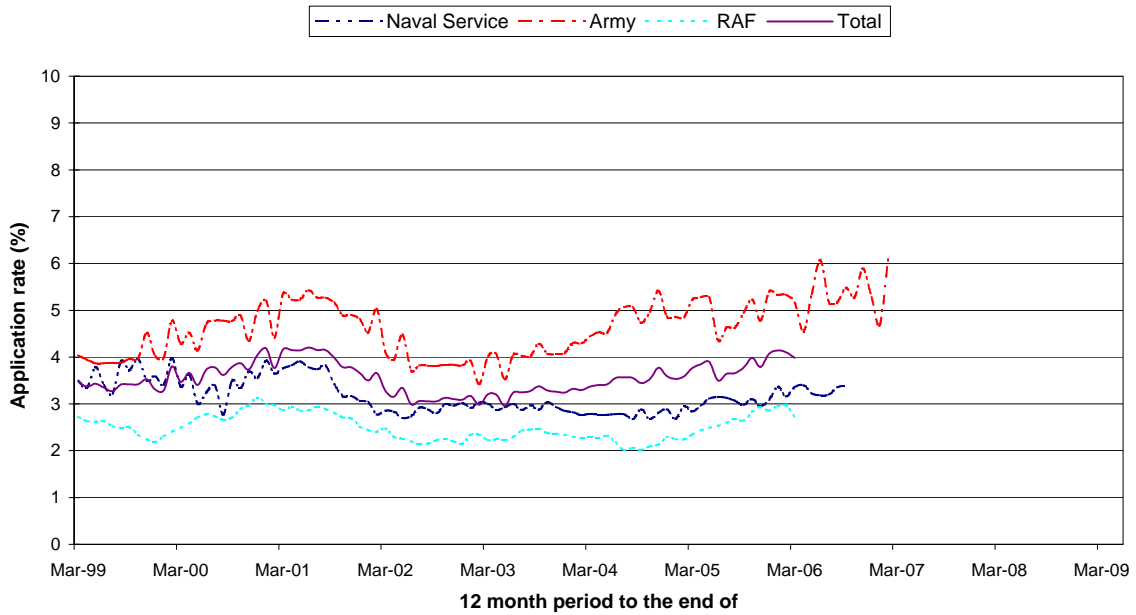
12 Month voluntary outflow rate as a percentage of average trained strength



Source: DASA (Quad-Service)

Graph 9a: Total Officers by Service

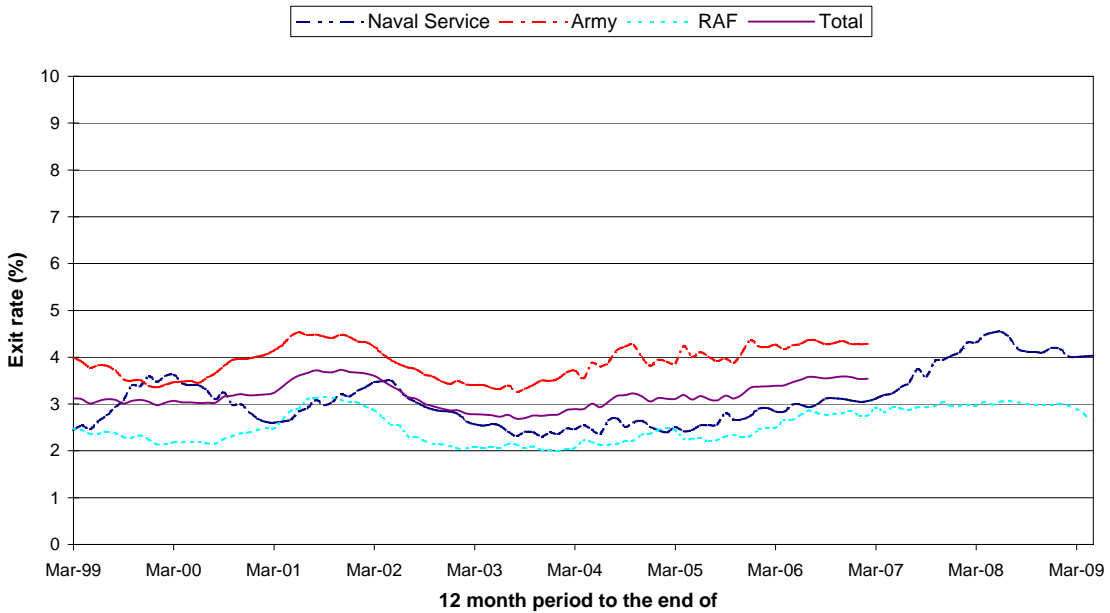
12 Month voluntary outflow application rate as a percentage of average trained strength



Source: DASA (Quad-Service)

Graph 9b: Total Officers by Service

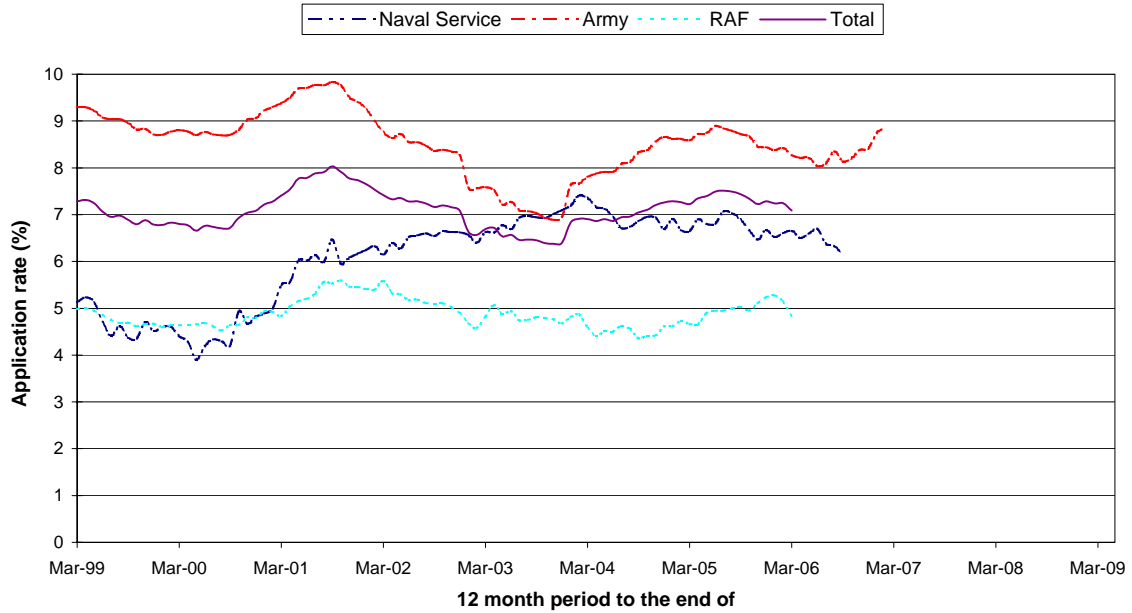
12 Month voluntary outflow exit rate as a percentage of average trained strength



Source: DASA (Quad-Service)

Graph 10a: Total Other Ranks by Service

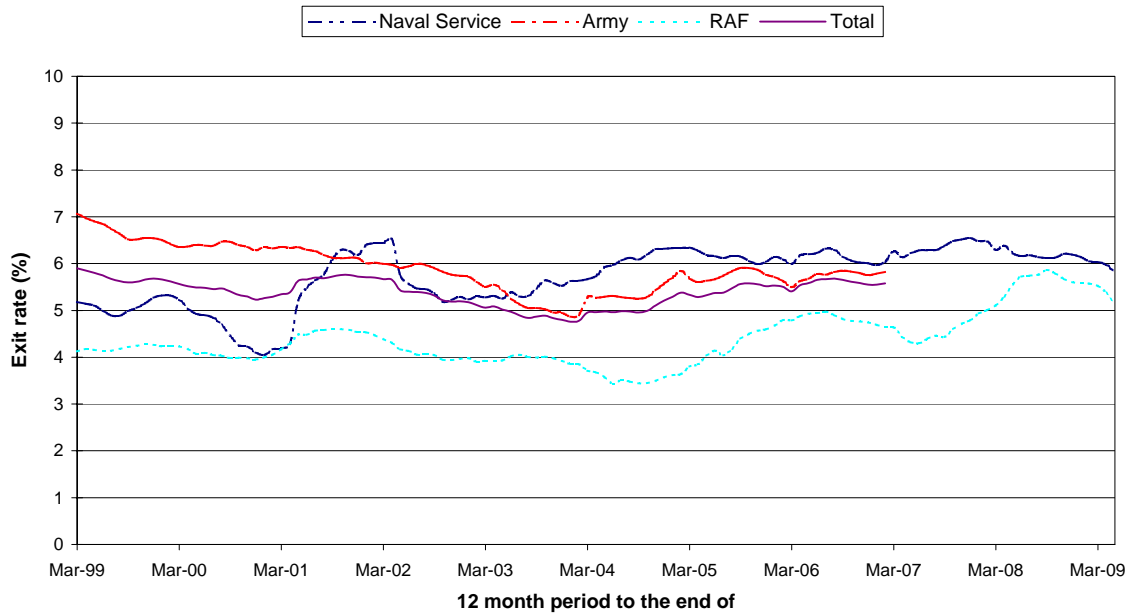
12 Month voluntary outflow application rate as a percentage of average trained strength



Source: DASA (Quad-Service)

Graph 10b: Total Other Ranks by Service

12 Month voluntary outflow exit rate as a percentage of average trained strength



Source: DASA (Quad-Service)

NAVAL SERVICE OFFICERS

Table 11: VOLUNTARY OUTFLOW - APPLICATIONS AND EXITS^{1,2,6}

Numbers and rates per 100 trained strength

Financial Years	APPLICATIONS						EXITS					
	Total		Male		Female		Total		Male		Female	
	Number	Rate	Number	Rate	Number	Rate	Number	Rate	Number	Rate	Number	Rate
1999/00	220	3.4	210	3.4	10	2.0	240	3.6	230	3.7	10	2.6
2000/01	240	3.8	230	3.7	20	4.7	170	2.6	160	2.5	20	3.9
2001/02	190	2.9	180	2.9	10	2.0	230	3.5	220	3.5	10	2.4
2002/03	200	3.0	180	3.0	20	3.6	170	2.6	160	2.6	10	2.0
2003/04	190	2.8	170	2.7	20	3.3	160	2.5	150	2.4	10	2.7
2004/05	190	2.8	170	2.8	20	3.2	170	2.5	150	2.4	20	3.8
2005/06	220	3.4	210	3.5	10	1.7	190	2.8	170	2.8	20	2.8
2006/07	210 P	3.1 P	190 P	3.2 P	20 P	2.8 P
2007/08	280 P	4.3 P	250 P	4.2 P	30 P	5.2 P
2008/09	260 P	4.0 P	230 P	4.0 P	20 P	4.2 P
12-Month Period Ending												
2006/07 30 Jun	210	3.2	200	3.3	10	2.1	200	3.0	180	3.0	10	2.6
30 Sep	220	3.4	210	3.5	10	2.6	210	3.1	190	3.1	20	3.0
31 Dec	200 P	3.1 P	190 P	3.1 P	20 P	3.1 P
31 Mar	210 P	3.1 P	190 P	3.2 P	20 P	2.8 P
2007/08 30 Jun	220 P	3.4 P	200 P	3.3 P	20 P	3.8 P
30 Sep	240 P	3.6 P	220 P	3.6 P	20 P	3.8 P
31 Dec	260 P	4.0 P	240 P	4.0 P	20 P	4.1 P
31 Mar	280 P	4.3 P	250 P	4.2 P	30 P	5.2 P
2008/09 30 Jun	300 P	4.5 P	270 P	4.5 P	30 P	4.8 P
30 Sep	270 P	4.1 P	240 P	4.1 P	30 P	4.6 P
31 Dec	270 P	4.2 P	250 P	4.2 P	20 P	4.4 P
31 Mar	260 P	4.0 P	230 P	4.0 P	20 P	4.2 P
31 Mar	260 P	4.0 P	230 P	4.0 P	20 P	4.2 P
30 Apr	260 P	4.0 P	230 P	4.0 P	20 P	4.4 P
31 May 2009	260 P	4.0 P	230 P	3.9 P	30 P	5.0 P

Source: DASA (Quad-Service)

NAVAL SERVICE OTHER RANKS

Table 12: VOLUNTARY OUTFLOW - APPLICATIONS AND EXITS^{1,3,4,6}

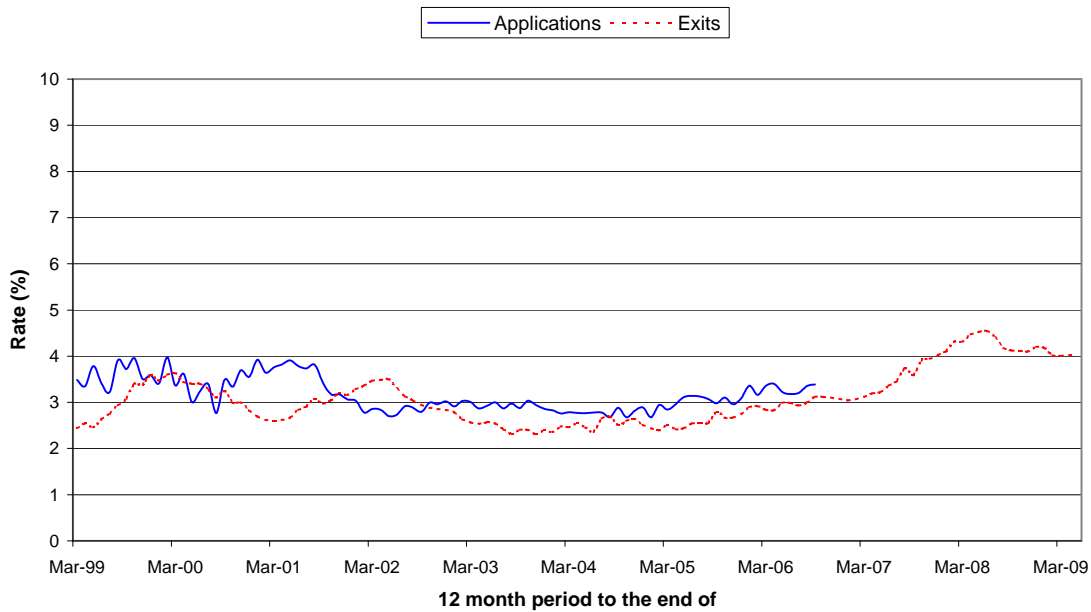
Numbers and rates per 100 trained strength

Financial Years	APPLICATIONS						EXITS					
	Total		Male		Female		Total		Male		Female	
	Number	Rate	Number	Rate	Number	Rate	Number	Rate	Number	Rate	Number	Rate
1999/00	1,410	4.4	1,230	4.2	180	7.5	1,680	5.2	1,400	4.7	280	11.3
2000/01	1,740	5.5	1,550	5.3	200	7.8	1,330	4.2	1,150	3.9	180	7.0
2001/02	1,880	6.1	1,660	5.9	220	8.8	1,970	6.4	1,710	6.1	270	10.7
2002/03	1,990	6.6	1,740	6.3	250	9.8	1,590	5.3	1,380	5.0	210	8.2
2003/04	2,190	7.4	1,960	7.2	230	8.8	1,680	5.7	1,440	5.3	240	9.2
2004/05	1,950	6.7	1,750	6.6	200	7.3	1,860	6.3	1,640	6.2	220	8.0
2005/06	1,900	6.7	1,690	6.5	210	7.8	1,700	6.0	1,490	5.8	220	8.2
2006/07	1,760 P	6.3 P	1,510 P	5.9 P	240 P	9.4 P
2007/08	1,760 P	6.3 P	1,530 P	6.0 P	230 P	8.7 P
2008/09	1,680 P	6.0 P	1,480 P	5.9 P	200 P	7.5 P
12-Month Period Ending												
2006/07 30 Jun	1,900	6.7	1,660	6.5	230	8.8	1,760	6.2	1,550	6.0	210	8.1
30 Sep	1,740	6.1	1,520	5.9	210	8.1	1,740	6.2	1,510	5.9	230	8.6
31 Dec	1,690 P	6.0 P	1,460 P	5.7 P	230 P	8.6 P
31 Mar	1,760 P	6.3 P	1,510 P	5.9 P	240 P	9.4 P
2007/08 30 Jun	1,750 P	6.3 P	1,510 P	6.0 P	240 P	9.2 P
30 Sep	1,770 P	6.4 P	1,530 P	6.1 P	240 P	9.5 P
31 Dec	1,820 P	6.5 P	1,580 P	6.3 P	240 P	9.4 P
31 Mar	1,760 P	6.3 P	1,530 P	6.0 P	230 P	8.7 P
2008/09 30 Jun	1,720 P	6.2 P	1,520 P	6.0 P	210 P	7.9 P
30 Sep	1,710 P	6.1 P	1,500 P	5.9 P	210 P	7.8 P
31 Dec	1,730 P	6.2 P	1,520 P	6.0 P	210 P	7.9 P
31 Mar	1,680 P	6.0 P	1,480 P	5.9 P	200 P	7.5 P
31 Mar	1,680 P	6.0 P	1,480 P	5.9 P	200 P	7.5 P
30 Apr	1,660 P	6.0 P	1,460 P	5.8 P	200 P	7.5 P
31 May 2009	1,620 P	5.8 P	1,420 P	5.6 P	200 P	7.7 P

Source: DASA (Quad-Service)

Graph 11: Naval Service Officers

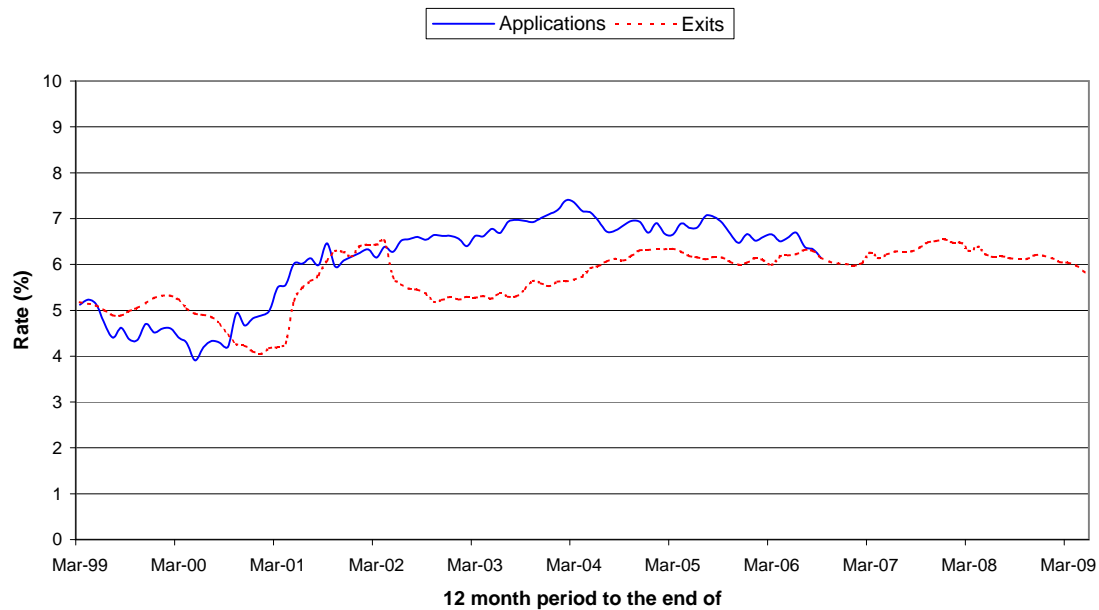
12 Month voluntary outflow rate as a percentage of average trained strength



Source: DASA (Quad-Service)

Graph 12: Naval Service Other Ranks

12 Month voluntary outflow rate as a percentage of average trained strength



Source: DASA (Quad-Service)

ARMY OFFICERS

Table 13: VOLUNTARY OUTFLOW - APPLICATIONS AND EXITS ^{1,2,7}

Numbers and rates per 100 trained strength

	APPLICATIONS						EXITS					
	Total		Male		Female		Total		Male		Female	
	Number	Rate	Number	Rate	Number	Rate	Number	Rate	Number	Rate	Number	Rate
Financial Years												
1999/00	550	4.3	500	4.3	50	4.5	440	3.5	410	3.5	30	2.9
2000/01	690	5.3	620	5.2	70	6.5	530	4.1	470	4.0	60	5.2
2001/02	530	4.1	460	3.9	70	6.1	540	4.2	490	4.2	50	4.6
2002/03	520	4.0	460	3.8	70	5.9	440	3.4	380	3.2	60	5.3
2003/04	600	4.4	530	4.4	60	4.9	500	3.7	440	3.6	60	4.3
2004/05	710	5.2	640	5.2	80	5.7	530	3.9	470	3.8	60	4.3
2005/06	710	5.2	630	5.1	80	5.7	590	4.3	530	4.3	50	3.8
2006/07
2007/08
2008/09
12-Month Period Ending												
2006/07 30 Jun	840	6.1	740	6.0	90	6.5	590	4.3	530	4.3	60	4.2
30 Sep	760	5.5	670	5.4	80	5.7	590	4.3	530	4.3	60	4.3
31 Dec	730	5.3	640	5.2	90	6.0	590	4.3	530	4.3	60	4.4
31 Mar
2007/08 30 Jun
30 Sep
31 Dec
31 Mar
2008/09 30 Jun
30 Sep
31 Dec
31 Mar
31 Mar
30 Apr
31 May 2009

Source: DASA (Quad-Service)

ARMY OTHER RANKS

Table 14: VOLUNTARY OUTFLOW - APPLICATIONS AND EXITS ^{1,7}

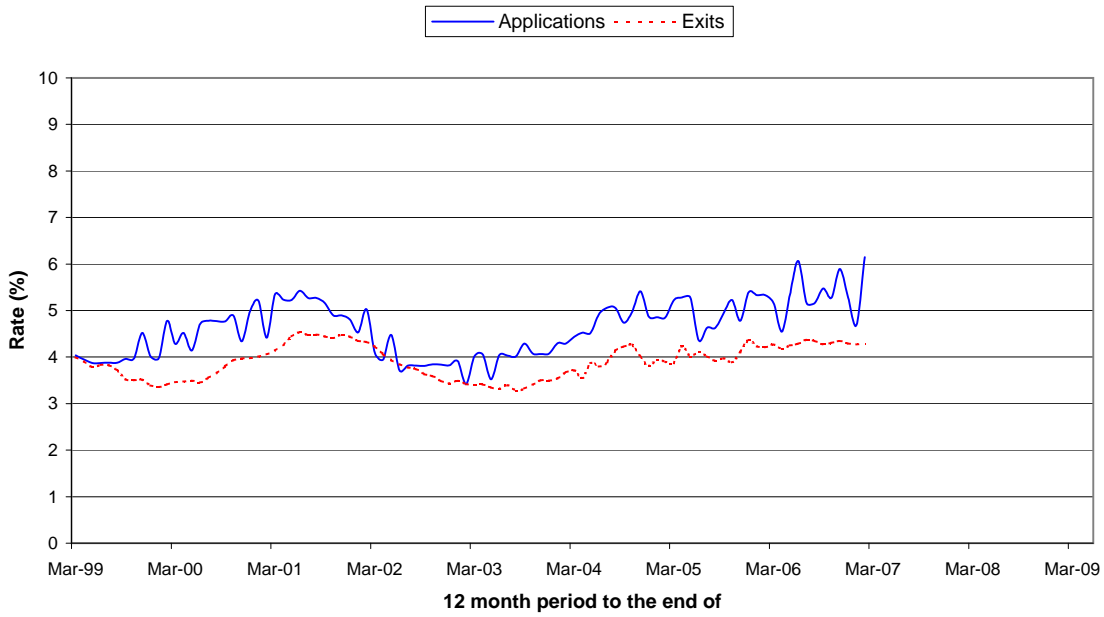
Numbers and rates per 100 trained strength

	APPLICATIONS						EXITS					
	Total		Male		Female		Total		Male		Female	
	Number	Rate	Number	Rate	Number	Rate	Number	Rate	Number	Rate	Number	Rate
Financial Years												
1999/00	7,360	8.8	6,660	8.5	700	13.4	5,310	6.4	4,860	6.2	460	8.7
2000/01	7,840	9.4	7,100	9.1	730	13.7	5,310	6.4	4,780	6.1	530	9.9
2001/02	7,280	8.8	6,620	8.5	660	12.3	4,980	6.0	4,520	5.8	460	8.6
2002/03	6,350	7.6	5,730	7.3	620	11.2	4,610	5.5	4,150	5.3	460	8.3
2003/04	6,650	7.8	6,030	7.6	620	10.7	4,500	5.3	4,060	5.1	440	7.6
2004/05	7,380	8.6	6,780	8.5	600	10.0	4,880	5.7	4,410	5.5	470	7.9
2005/06	6,950	8.3	6,340	8.1	600	10.2	4,620	5.5	4,210	5.4	410	6.9
2006/07
2007/08
2008/09
12-Month Period Ending												
2006/07 30 Jun	6,710	8.0	6,110	7.9	600	10.2	4,830	5.8	4,400	5.7	420	7.2
30 Sep	6,760	8.1	6,150	8.0	600	10.3	4,850	5.8	4,440	5.8	410	7.1
31 Dec	6,940	8.4	6,310	8.2	620	10.7	4,740	5.8	4,330	5.6	410	7.1
31 Mar
2007/08 30 Jun
30 Sep
31 Dec
31 Mar
2008/09 30 Jun
30 Sep
31 Dec
31 Mar
31 Mar
30 Apr
31 May 2009

Source: DASA (Quad-Service)

Graph 13: Army Officers

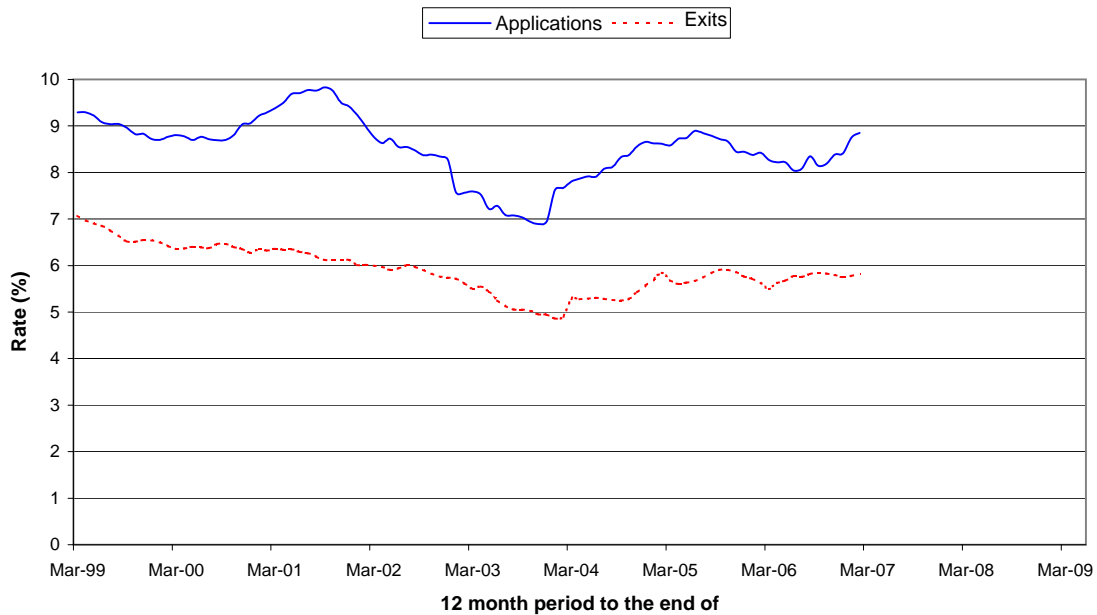
12 Month voluntary outflow rate as a percentage of average trained strength



Source: DASA (Quad-Service)

Graph 14: Army Other Ranks

12 Month voluntary outflow rate as a percentage of average trained strength



Source: DASA (Quad-Service)

RAF OFFICERS

Table 15: VOLUNTARY OUTFLOW - APPLICATIONS AND EXITS ^{1,2}

Numbers and rates per 100 trained strength

	APPLICATIONS						EXITS					
	Total		Male		Female		Total		Male		Female	
	Number	Rate	Number	Rate	Number	Rate	Number	Rate	Number	Rate	Number	Rate
Financial Years												
1999/00	240	2.5	210	2.4	30	3.3	210	2.2	190	2.2	20	2.2
2000/01	280	2.9	250	2.9	30	2.9	240	2.5	220	2.5	20	2.4
2001/02	240	2.5	200	2.3	40	3.5	280	2.9	240	2.8	30	3.0
2002/03	210	2.2	180	2.1	40	3.5	200	2.1	180	2.1	20	2.3
2003/04	220	2.3	190	2.2	30	2.9	200	2.1	170	2.0	30	2.6
2004/05	230	2.3	180	2.2	40	3.5	240	2.4	200	2.4	40	2.9
2005/06	260	2.7	220	2.6	40	3.3	240	2.5	190	2.3	40	3.5
2006/07	260	2.9	230	2.9	40	3.0
2007/08	260 ^P	3.0 ^P	230 ^P	3.1 ^P	30 ^P	2.2 ^P
2008/09	250 ^P	2.9 ^P	220 ^P	3.0 ^P	30 ^P	2.3 ^P
12-Month Period Ending												
2006/07 30 Jun	260	2.8	210	2.6	50	4.2
30 Sep	260	2.8	210	2.7	40	3.5
31 Dec	260	2.9	220	2.8	40	3.0
31 Mar	260	2.9	230	2.9	40	3.0
2007/08 30 Jun	260 ^P	2.9 ^P	230 ^P	3.0 ^P	30 ^P	2.5 ^P
30 Sep	260 ^P	2.9 ^P	230 ^P	3.0 ^P	30 ^P	2.6 ^P
31 Dec	260 ^P	3.0 ^P	230 ^P	3.0 ^P	30 ^P	2.4 ^P
31 Mar	260 ^P	3.0 ^P	230 ^P	3.1 ^P	30 ^P	2.2 ^P
2008/09 30 Jun	260 ^P	3.1 ^P	230 ^P	3.1 ^P	40 ^P	2.8 ^P
30 Sep	260 ^P	3.0 ^P	230 ^P	3.1 ^P	30 ^P	2.4 ^P
31 Dec	250 ^P	3.0 ^P	230 ^P	3.1 ^P	20 ^P	2.0 ^P
31 Mar	250 ^P	2.9 ^P	220 ^P	3.0 ^P	30 ^P	2.3 ^P
31 Mar	250 ^P	2.9 ^P	220 ^P	3.0 ^P	30 ^P	2.3 ^P
30 Apr	240 ^P	2.8 ^P	210 ^P	2.9 ^P	20 ^P	1.8 ^P
31 May 2009	220^P	2.6^P	210^P	2.8^P	20^P	1.5^P

Source: DASA (Quad-Service)

RAF OTHER RANKS

Table 16: VOLUNTARY OUTFLOW - APPLICATIONS AND EXITS ^{1,4}

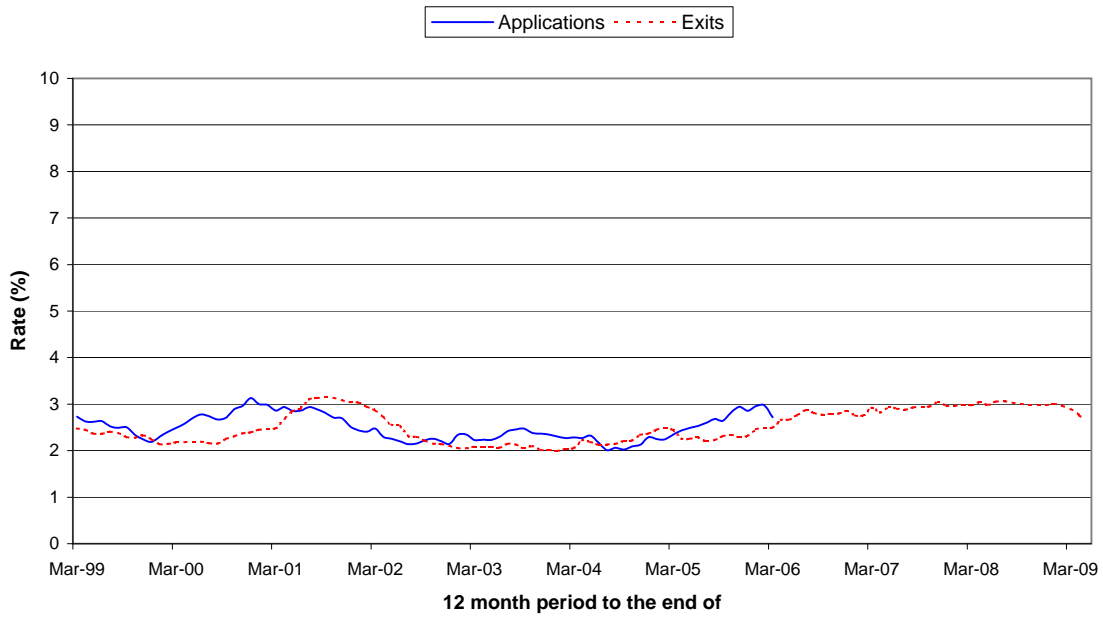
Numbers and rates per 100 trained strength

	APPLICATIONS						EXITS					
	Total		Male		Female		Total		Male		Female	
	Number	Rate	Number	Rate	Number	Rate	Number	Rate	Number	Rate	Number	Rate
Financial Years												
1999/00	1,920	4.6	1,610	4.3	320	8.3	1,760	4.2	1,490	4.0	260	6.9
2000/01	1,960	4.8	1,640	4.5	320	8.2	1,690	4.2	1,400	3.8	290	7.3
2001/02	2,210	5.6	1,820	5.1	400	10.0	1,740	4.4	1,470	4.1	270	6.8
2002/03	1,880	4.8	1,560	4.4	320	8.0	1,530	3.9	1,300	3.7	230	5.7
2003/04	1,780	4.6	1,470	4.3	310	7.3	1,440	3.7	1,220	3.5	230	5.4
2004/05	1,830	4.7	1,500	4.3	330	7.5	1,490	3.8	1,260	3.6	230	5.3
2005/06	1,860	4.8	1,540	4.5	320	7.2	1,840	4.8	1,570	4.6	270	6.1
2006/07	1,640	4.6	1,390	4.5	250	5.8
2007/08	1,670 ^P	5.1 ^P	1,440 ^P	5.0 ^P	240 ^P	5.8 ^P
2008/09	1,720 ^P	5.5 ^P	1,460 ^P	5.4 ^P	250 ^P	6.5 ^P
12-Month Period Ending												
2006/07 30 Jun	1,860	4.9	1,590	4.8	280	6.3
30 Sep	1,780	4.8	1,510	4.7	260	6.0
31 Dec	1,710	4.7	1,470	4.6	240	5.6
31 Mar	1,640	4.6	1,390	4.5	250	5.8
2007/08 30 Jun	1,490 ^P	4.3 ^P	1,270 ^P	4.2 ^P	220 ^P	5.2 ^P
30 Sep	1,510 ^P	4.4 ^P	1,280 ^P	4.3 ^P	230 ^P	5.6 ^P
31 Dec	1,600 ^P	4.8 ^P	1,360 ^P	4.6 ^P	240 ^P	5.8 ^P
31 Mar	1,670 ^P	5.1 ^P	1,440 ^P	5.0 ^P	240 ^P	5.8 ^P
2008/09 30 Jun	1,840 ^P	5.7 ^P	1,590 ^P	5.6 ^P	250 ^P	6.4 ^P
30 Sep	1,860 ^P	5.9 ^P	1,600 ^P	5.8 ^P	260 ^P	6.5 ^P
31 Dec	1,760 ^P	5.6 ^P	1,500 ^P	5.5 ^P	250 ^P	6.4 ^P
31 Mar	1,720 ^P	5.5 ^P	1,460 ^P	5.4 ^P	250 ^P	6.5 ^P
31 Mar	1,720 ^P	5.5 ^P	1,460 ^P	5.4 ^P	250 ^P	6.5 ^P
30 Apr	1,660 ^P	5.4 ^P	1,410 ^P	5.2 ^P	260 ^P	6.5 ^P
31 May 2009	1,580^P	5.1^P	1,330^P	4.9^P	250^P	6.5^P

Source: DASA (Quad-Service)

Graph 15: RAF Officers

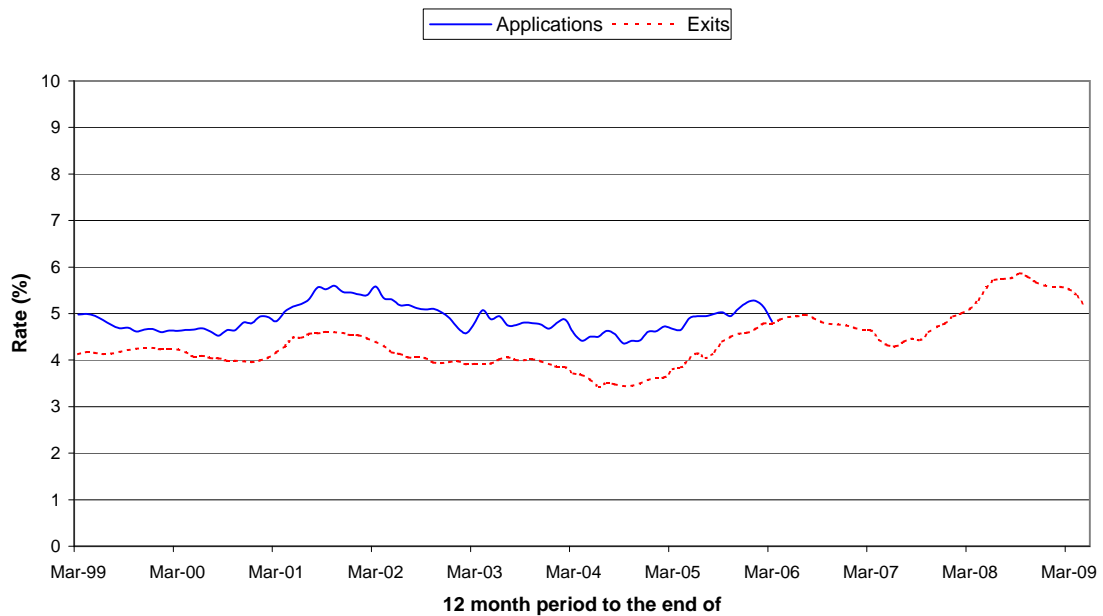
12 Month voluntary outflow rate as a percentage of average trained strength



Source: DASA (Quad-Service)

Graph 16: RAF Other Ranks

12 Month voluntary outflow rate as a percentage of average trained strength



Source: DASA (Quad-Service)

OFFICERS

Table 17: INDEX OF UNDERLYING VOLUNTARY OUTFLOW RATE

Index: FY 1999/00 = 100

	ALL SERVICES		NAVAL SERVICE		ARMY		RAF	
	Male Index	Female Index ⁷	Male Index	Female Index ⁸	Male Index	Female Index ⁷	Male Index	Female Index ⁷
Financial Years								
2001/02	116.5	120.7	100.0	*	119.5	143.0	119.4	113.8
2002/03	91.9	132.8	76.7	*	94.1	191.9	101.7	94.6
2003/04	96.3	107.2	71.9	*	108.4	157.7	89.0	76.8
2004/05	101.3	131.1	69.6	*	111.6	168.7	100.8	105.4
2005/06	108.9	119.7	79.4	*	124.2	134.5	96.9	112.1
2006/07	84.2	*	103.6	93.3
2007/08	108.5 P	*	121.8	63.0
2008/09	108.8 P	*	125.7 P	78.3 P
12-Month Period Ending								
2006/07 30 Jun	110.8	133.4	84.0	*	121.9	143.3	99.4	131.5
30 Sep	112.8	127.8	86.1	*	122.1	154.6	100.8	109.3
31 Dec	113.1 P	118.8 P	84.2 P	*	121.3	145.5	103.3	94.3
31 Mar	84.2 P	*	103.6	93.3
2007/08 30 Jun	86.5 P	*	117.7 P	69.6 P
30 Sep	91.3 P	*	115.7 P	73.7 P
31 Dec	101.2 P	*	119.3 P	68.9 P
31 Mar	108.5 P	*	121.8 P	63.0 P
2008/09 30 Jun	119.0 P	*	128.7 P	86.8 P
30 Sep	111.1 P	*	130.2 P	79.9 P
31 Dec	114.0 P	*	131.5 P	79.5 P
31 Mar	108.8 P	*	125.7 P	78.3 P
31 Mar	108.8 P	*	125.7 P	78.3 P
30 Apr	110.9 P	*	123.5 P	63.3 P
31 May 2009	110.4 P	*	120.2 P	54.1 P

Source:DASA (Quad-Service)

OTHER RANKS

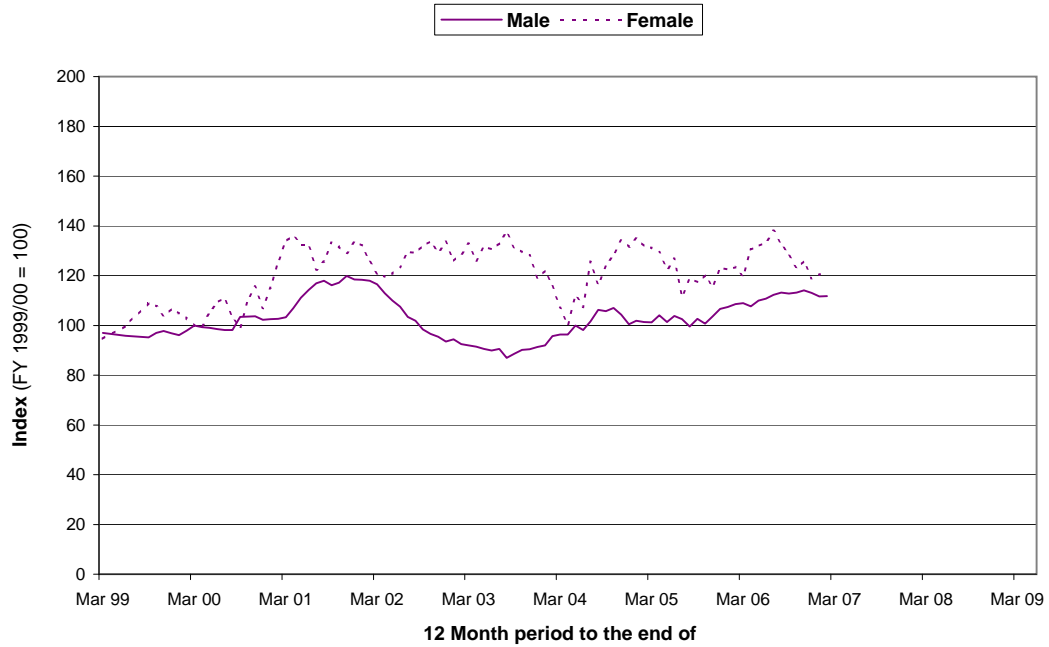
Table 18: INDEX OF UNDERLYING VOLUNTARY OUTFLOW RATE

Index: FY 1999/00 = 100

	ALL SERVICES		NAVAL SERVICE ^{3,4}		ARMY		RAF ⁴	
	Male Index	Female Index	Male Index	Female Index	Male Index	Female Index	Male Index	Female Index
Financial Years								
2001/02	98.1	92.8	122.8	99.0	91.5	86.7	101.4	98.1
2002/03	83.5	74.7	95.5	72.7	81.6	78.8	82.4	76.3
2003/04	81.0	76.2	97.1	86.1	80.0	76.6	78.1	76.4
2004/05	88.2	76.4	113.9	83.9	86.9	82.3	84.9	74.3
2005/06	89.0	71.6	105.0	73.1	84.5	68.1	104.8	81.7
2006/07	97.4	75.9	94.6	72.5
2007/08	96.3 P	73.7 P	99.7	72.8
2008/09	106.0 P	70.3 P	113.9 P	82.0 P
12-Month Period Ending								
2006/07 30 Jun	93.0	72.4	108.5	68.9	88.1	70.8	107.1	81.1
30 Sep	92.4	71.8	103.7	73.3	88.9	69.2	104.7	79.6
31 Dec	89.4 P	70.0 P	98.4 P	74.1 P	86.1	70.1	102.3	70.3
31 Mar	97.4 P	75.9 P	94.6	72.5
2007/08 30 Jun	92.0 P	70.4 P	89.9 P	66.2 P
30 Sep	90.7 P	72.0 P	90.9 P	70.4 P
31 Dec	94.4 P	72.6 P	94.3 P	72.7 P
31 Mar	96.3 P	73.7 P	99.7 P	72.8 P
2008/09 30 Jun	102.8 P	72.9 P	113.2 P	80.2 P
30 Sep	104.3 P	72.6 P	115.2 P	81.9 P
31 Dec	107.5 P	74.0 P	112.9 P	79.2 P
31 Mar	106.0 P	70.3 P	113.9 P	82.0 P
31 Mar	106.0 P	70.3 P	113.9 P	82.0 P
30 Apr	104.8 P	69.9 P	110.3 P	84.2 P
31 May 2009	101.2 P	70.8 P	105.6 P	82.8 P

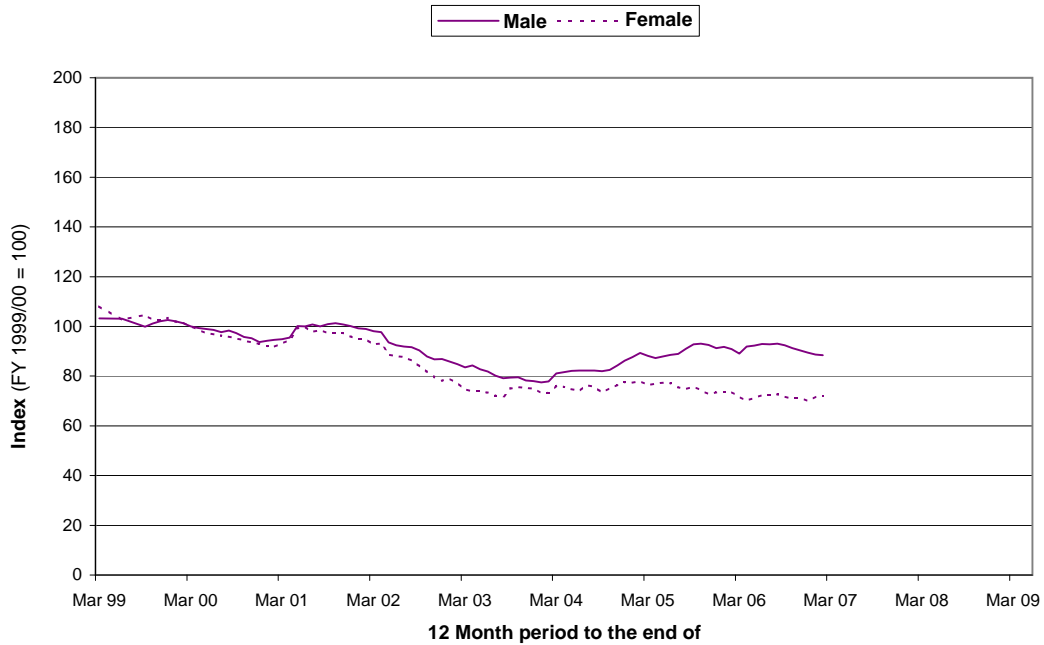
Source:DASA (Quad-Service)

Graph 17: All Services Officers
Index of Underlying Voluntary Outflow Rate



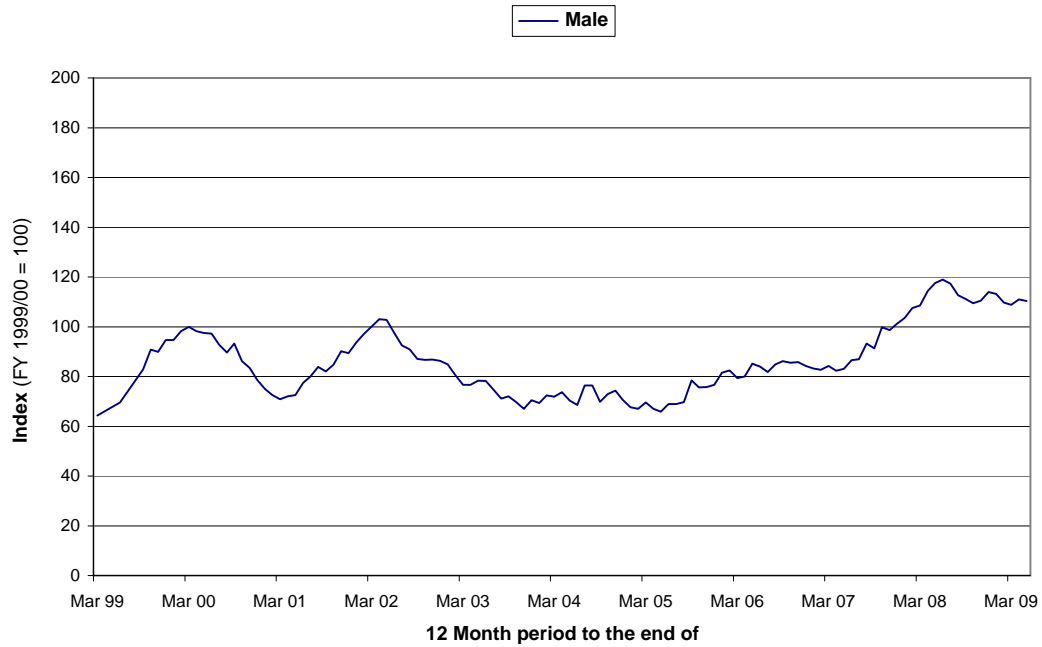
Source: DASA (Quad-Service)

Graph 18: All Services Other Ranks
Index of Underlying Voluntary Outflow Rate



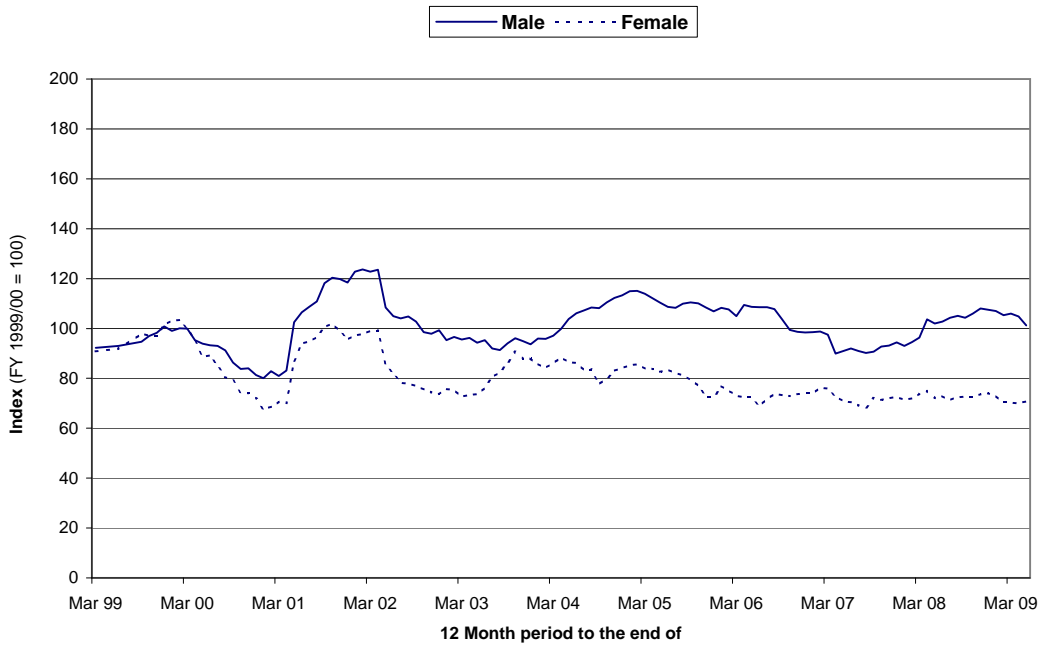
Source: DASA (Quad-Service)

Graph 19: Naval Service Officers
Index of Underlying Voluntary Outflow Rate⁹



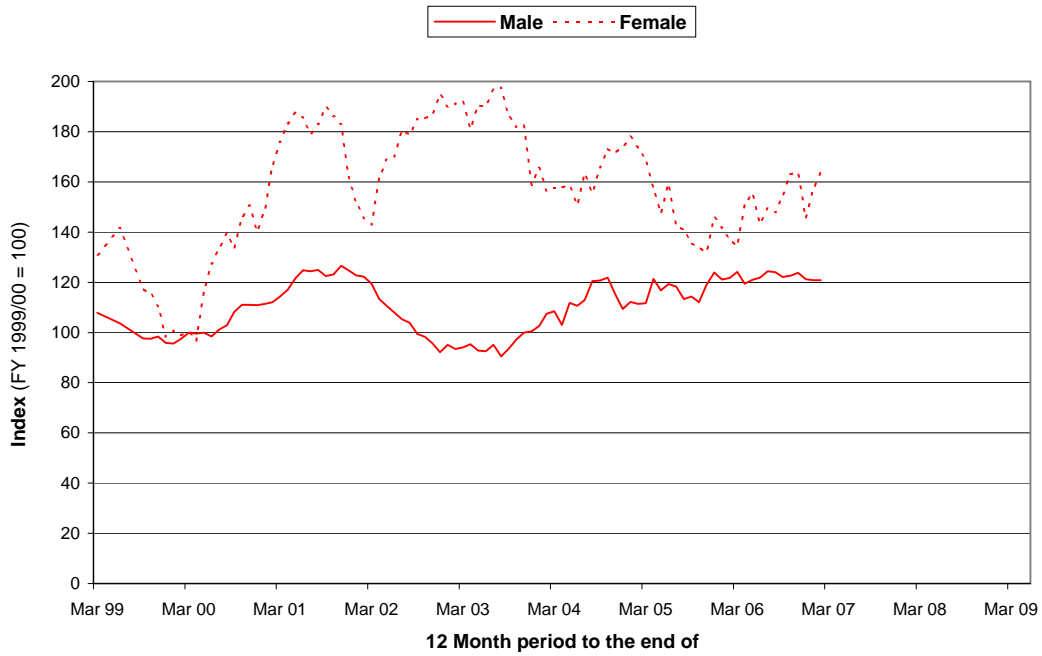
Source: DASA (Quad-Service)

Graph 20: Naval Service Other Ranks
Index of Underlying Voluntary Outflow Rate



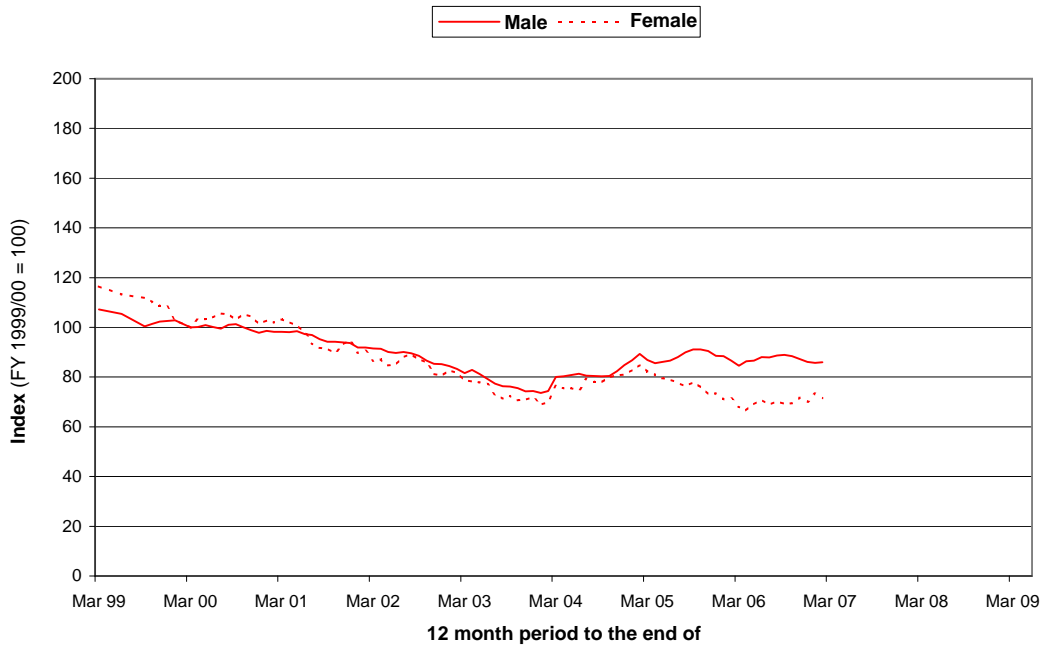
Source: DASA (Quad-Service)

Graph 21: Army Officers
Index of Underlying Voluntary Outflow Rate



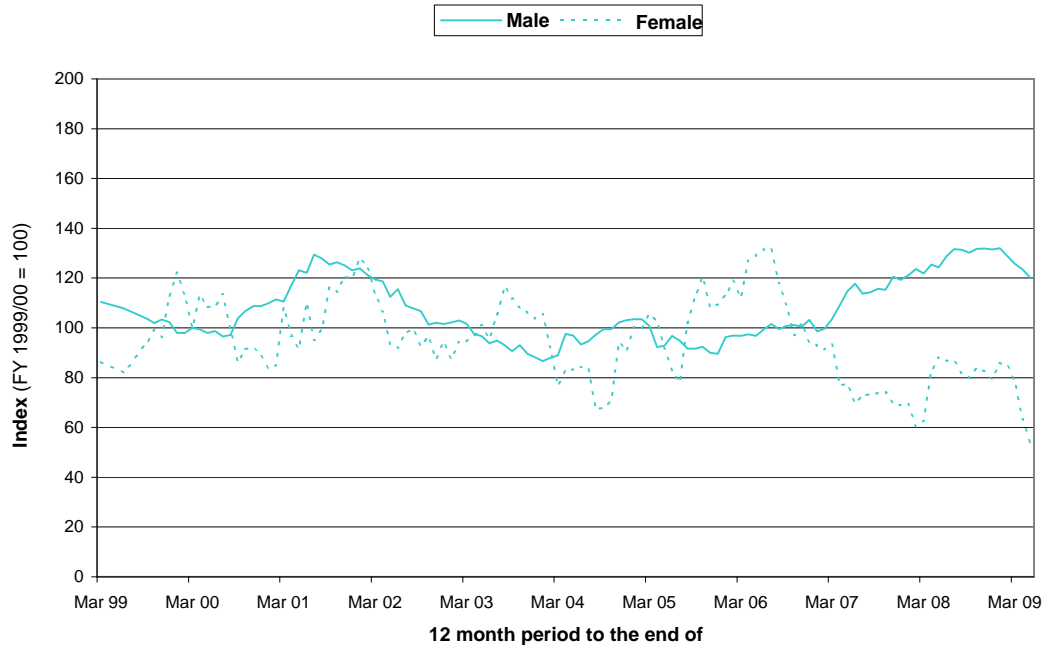
Source: DASA (Quad-Service)

Graph 22: Army Other Ranks
Index of Underlying Voluntary Outflow Rate



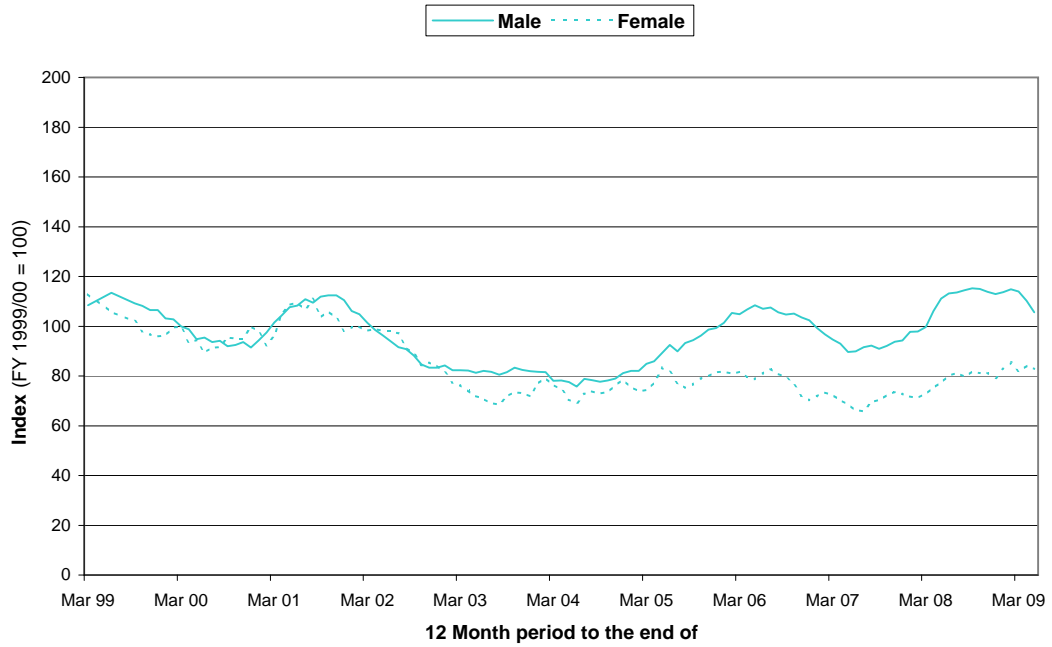
Source: DASA (Quad-Service)

Graph 23: RAF Officers
Index of Underlying Voluntary Outflow Rate



Source: DASA (Quad-Service)

Graph 24: RAF Other Ranks
Index of Underlying Voluntary Outflow Rate



Source: DASA (Quad-Service)

General Notes:

Due to ongoing validation of data from the new Personnel Administration System, all Naval Service flow statistics from the 12 month period ending 31 October 2006, and Naval Service strength statistics from 1 May 2007 are provisional and subject to review. All Army flow statistics from the 12 month period ending 31 March 2007 and strength statistics from 1 April 2007 are provisional and subject to review. All RAF flow statistics from the 12 month period ending 30 April 2007 and strength statistics from 1 May 2007 are provisional and subject to review. Army reasons for exit, including VO, are currently unavailable from the 12 month period ending 31 March 2007 onwards.

All Naval Service Voluntary Outflow (VO) Applications data from the 12 month period ending 31 October 2006, all Army VO Applications data from the 12 month period ending 28 February 2007 and all RAF VO Application data from the 12 month period ending 31 March 2006 are currently unavailable.

For Index of Underlying VO Exit Rate, all Naval Service statistics from the 12 month period ending 31 October 2006 and RAF statistics from the 12 month period ending 31 March 2007 are provisional and subject to review.

For the purpose of this return, VO is defined as all applications and exits from trained personnel which are voluntarily generated by the individual before the end of their agreed engagement or commission period (i.e. Time Expiry). Females who leave on marriage grounds are included in both VO applications and exits.

UK Regular Forces includes Nursing services and excludes Full Time Reserve Service personnel, Gurkhas, the Home Service battalions of the Royal Irish Regiment and mobilised reservists.

Figures show all outflow from UK Regular Forces including recalled reservists on release and outflow to the Home Service battalions of the Royal Irish Regiment. Figures do not include promotion from ranks to officer or crossflows between the three services. Naval Service figures prior to the introduction of the new Personnel Administration system do include outflows to other services.

Other wastage includes outflow due to medical reasons, for misconduct, dismissals and death, amongst others.

DASA have developed an additional measure of VO, which we call the 'index of underlying rate'. This is essentially a measure that is not unduly affected by differences in the number of personnel in the different length of trained service categories. If a value is greater than 100, then personnel are more likely to leave voluntarily now than they were at a given point in time (FY 1999/00 for this publication), conversely a value less than 100 implies a lesser propensity to leave. Comparisons cannot be made across gender, rank and service however as each group are indexed to their own base.

All applications are counted according to the date received in MoD.

Average Trained Strength is defined as a 13 month rolling average of the trained strength in the individual months.

Due to the rounding methods used, totals may not always equal the sum of the parts. When rounding to the nearest 10, numbers ending in 5 have been rounded to the nearest multiple of 20 to prevent systematic bias.

p denotes provisional.

- denotes zero, rounded to zero or a percentage based on fewer than five instances.

* denotes not applicable.

r denotes revised

.. denotes unavailable.

Notes to tables:7

- 1 Annual rates are calculated by taking the number of applications or exits as a percentage of the average strength of all trained Officers or Other Ranks.
- 2 Officer numbers comprise applications and resultant exits for premature transfer to the Reserve, premature voluntary retirement and voluntary relinquishment or resignation of commission.
- 3 For all Naval Service Other Ranks VO applications received on or after 1 June 2000, the maximum time period between date of application and exit was reduced from 18 months to 12. This effectively compressed 18 months of exits into the financial year 2001/02.
- 4 The numbers of Naval Service and RAF Other Ranks permitted to leave at particular periods have been controlled by the imposition of increased waiting periods or alternatively by relaxation of the notice period. Specific details should be sought from the appropriate single Service branch or from DASA (Quad-Service).
- 5 "Time Expiry" and "Other Wastage" exit reason totals and rates for RAF Officers and Other Ranks personnel for the 12 month ending periods post 30 June 2008 have been excluded. Since 1 July 2008 there has been an increase in "Unknowns" (which are grouped in the "Other Wastage" category), which has had significant affects on "Other Wastage" and "Time Expiry" exit reason totals and rates.
- 6 Naval Service applications exclude any applications withdrawn prior to input onto the Naval Service pay system.
- 7 For certain groups of female personnel, data on exits on marriage or pregnancy grounds are available, but data on applications are not. In these cases, the number of applications in a period has been counted as the number of exits during that period. This affects:
 - a. Army Officers who exit on pregnancy;
 - b. Army Soldiers who exit on marriage or pregnancy.
- 8 Female Officer rates are susceptible to fluctuation due to small populations and so should be treated with caution. A change in the VO profile caused by an amendment to terms and conditions of service, for example, can have a significant impact on the underlying VO rates.
- 9 Female Naval Service Officer figures have been excluded due to the volatility of the time series caused by small populations.